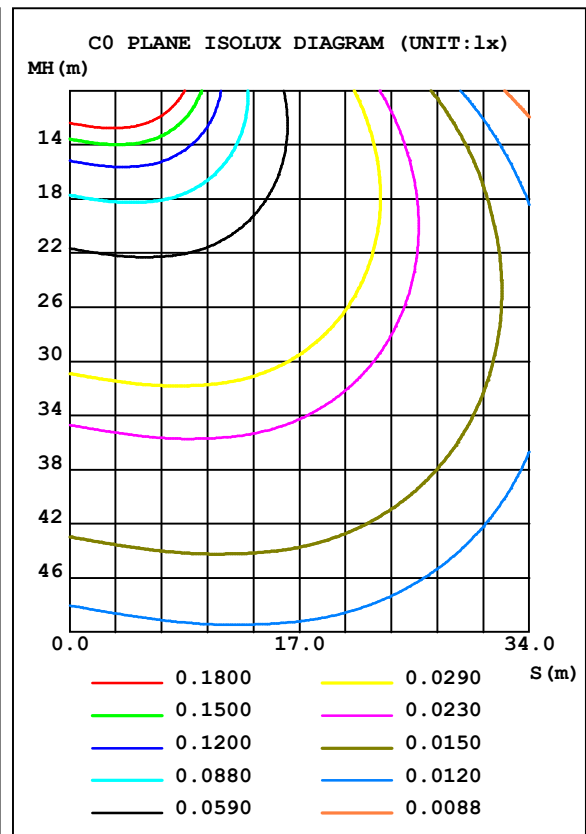
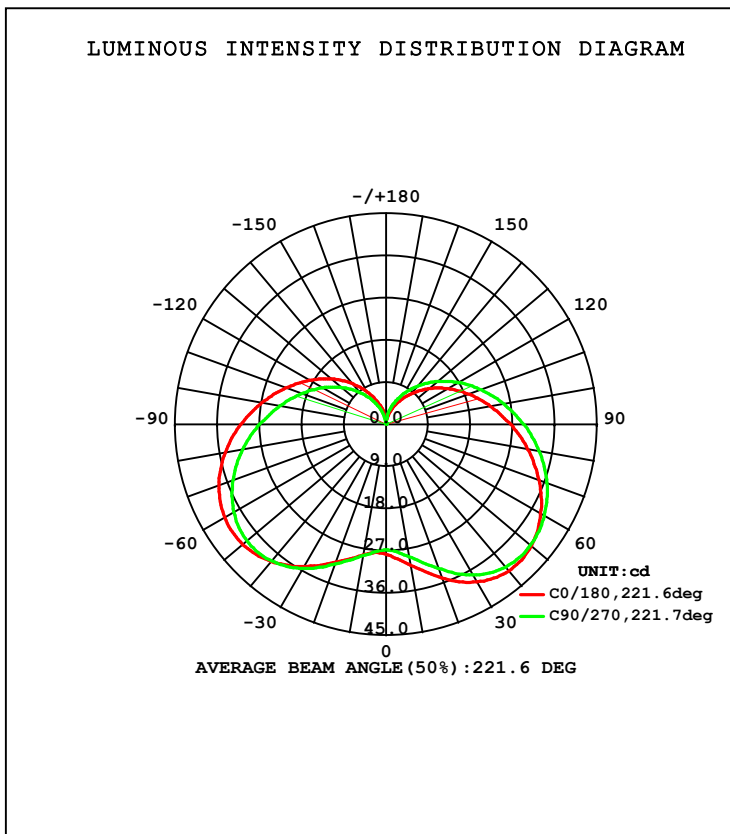


LUMINAIRE PHOTOMETRIC TEST REPORT

NAME: C37塑料4W拉尾E14	TYPE:	WEIGHT:
DIM.:	SPEC.:	SERIAL No.:
MFR.: MK	SUR.:	PROTECTION ANGLE:

DATA OF LAMP		PHOTOMETRIC DATA Eff: 78.37 lm/W			
MODEL	C37	I _{max} (cd)	41.32	S/MH (C0/180)	2.06
NOMINAL POWER (W)	4	LOR (%)	127.7	S/MH (C90/270)	2.09
RATED VOLTAGE (V)	230	TOTAL FLUX (lm)	324.86	η UP, DN (C0-180)	20.5, 44.3
NOMINAL FLUX (lm)	254.365	CIE CLASS	SEMI-D.	η UP, DN (C180-360)	19.8, 43.2
LAMPS INSIDE	1	η up (%)	40.2	CIBSE SHR NOM	2.00
TEST VOLTAGE (V)	230.8	η down (%)	87.5	CIBSE SHR MAX	0.00



C Range: 0 - 360DEG
 C Interval: 45.0DEG
 Test Speed: HIGH
 Temperature: 25.3DEG
 Operators:
 Test Date: 2013-03-18

γ Range: 0 - 180DEG
 γ Interval: 1.0DEG
 Test System: EVERFINE GO-2000A_V1 SYSTEM V2.0.276
 Humidity: 65.0%
 Test Distance: 8.920m [K=1.0000]
 Remarks:

ZONAL FLUX DIAGRAM

ZONAL FLUX DIAGRAM:

γ	C0	C45	C90	C135	C180	C225	C270	C315	γ	Φ zone	Φ total	%lum, lamp
10	30.54	29.87	28.70	27.42	28.30	28.19	28.47	29.05	0- 10	2.672	2.672	0.82,1.05
20	34.85	34.49	32.67	30.42	31.26	31.17	31.70	32.64	10- 20	8.707	11.38	3.5,4.47
30	38.83	38.96	37.12	34.27	35.02	35.07	35.47	36.15	20- 30	16.00	27.38	8.43,10.8
40	40.81	41.18	39.74	37.42	38.21	37.94	38.06	38.07	30- 40	23.78	51.15	15.7,20.1
50	40.45	40.86	40.22	38.98	39.89	39.18	38.74	38.01	40- 50	30.52	81.67	25.1,32.1
60	38.08	38.66	39.01	38.82	39.78	38.43	37.50	36.20	50- 60	35.04	116.7	35.9,45.9
70	34.70	35.37	36.54	37.15	37.96	36.07	34.74	33.17	60- 70	36.82	153.5	47.3,60.4
80	30.74	31.60	33.20	34.28	34.87	32.61	31.07	29.43	70- 80	35.98	189.5	58.3,74.5
90	26.61	27.70	29.41	30.67	31.01	28.65	27.01	25.45	80- 90	33.04	222.5	68.5,87.5
100	22.64	23.87	25.52	26.74	26.89	24.67	23.01	21.61	90-100	28.74	251.3	77.3,98.8
110	18.91	20.12	21.68	22.81	22.79	20.81	19.26	17.98	100-110	23.76	275.0	84.7,108
120	15.33	16.52	17.93	18.96	18.92	17.15	15.71	14.50	110-120	18.59	293.6	90.4,115
130	11.89	13.02	14.29	15.22	15.14	13.61	12.28	11.17	120-130	13.58	307.2	94.6,121
140	8.666	9.718	10.79	11.59	11.45	10.18	9.017	8.014	130-140	9.031	316.2	97.3,124
150	5.820	6.723	7.565	8.146	7.962	6.952	6.028	5.214	140-150	5.278	321.5	99,126
160	3.326	4.060	4.682	5.114	4.900	4.150	3.354	2.713	150-160	2.536	324.0	99.7,127
170	0.2556	0.4434	1.623	2.307	1.931	0.6705	0.3086	0.2636	160-170	0.7818	324.8	100,128
180	0.2433	0.2383	0.2028	0.2281	0.2433	0.2383	0.2332	0.2180	170-180	0.0393	324.9	100,128
DEG	LUMINOUS INTENSITY:cd									UNIT:lm		

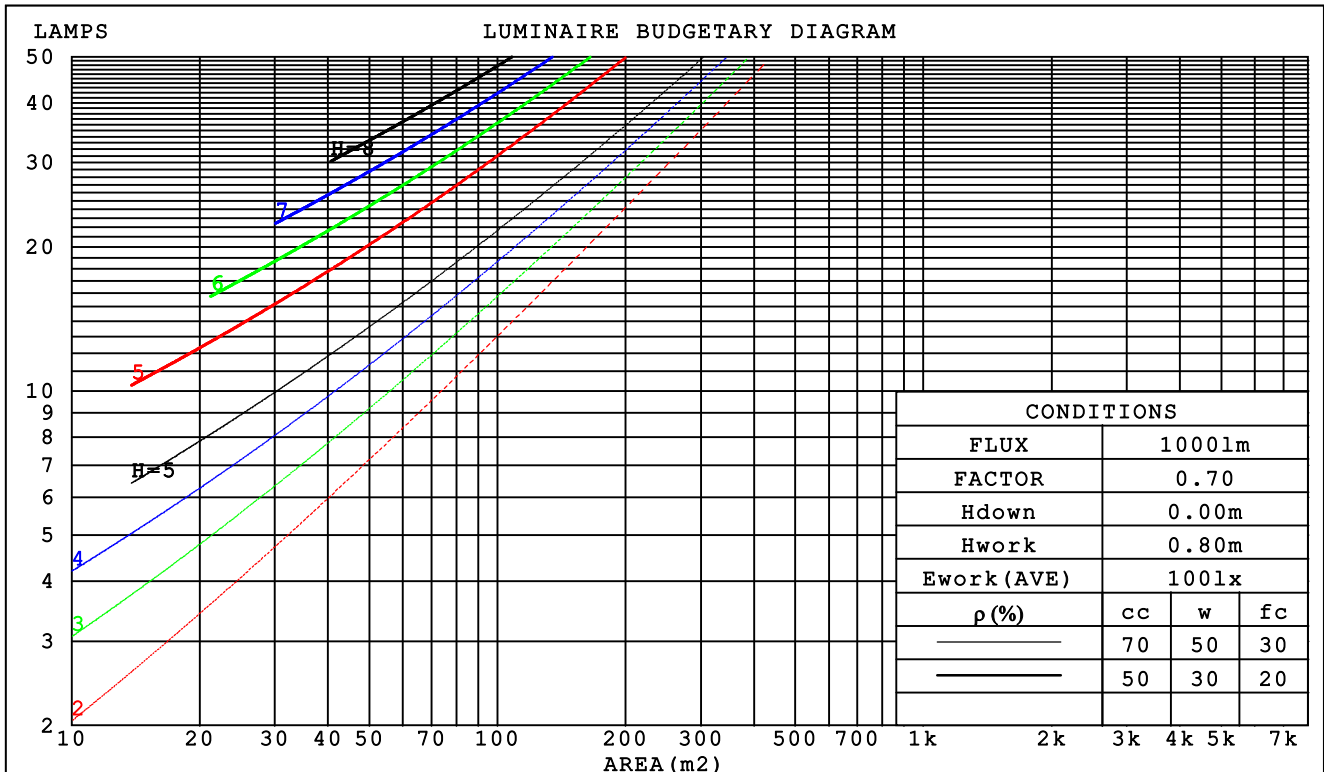
C Range: 0 - 360DEG
 C Interval: 45.0DEG
 Test Speed: HIGH
 Temperature:25.3DEG
 Operators:
 Test Date:2013-03-18

γ Range: 0 - 180DEG
 γ Interval: 1.0DEG
 Test System:EVERFINE GO-2000A_V1 SYSTEM V2.0.276
 Humidity:65.0%
 Test Distance:8.920m [K=1.0000]
 Remarks:

CU AND LUMINAIRE BUDGETARY ESTIMATE DIAGRAM

NAME: C37塑料4W拉尾E14	TYPE:	WEIGHT:
DIM.:	SPEC.:	SERIAL No.:
MFR.: MK	SUR.:	PROTECTION ANGLE:

pcc	80%			70%			50%			30%			10%			0
pw	50%	30%	10%	50%	30%	10%	50%	30%	10%	50%	30%	10%	50%	30%	10%	0
pfc	20%			20%			20%			20%			20%			0
RCR	RCR:Room Cavity Ratio						Coefficients of Utilization(CU)									
0.0	1.42	1.42	1.42	1.34	1.34	1.34	1.20	1.20	1.20	1.06	1.06	1.06	.93	.93	.93	.87
1.0	1.15	1.07	1.01	1.08	1.01	.95	.95	.90	.85	.83	.79	.75	.72	.69	.66	.60
2.0	.97	.86	.77	.91	.81	.73	.80	.72	.65	.69	.63	.57	.60	.55	.50	.45
3.0	.83	.71	.61	.78	.67	.58	.68	.59	.52	.59	.52	.46	.51	.45	.40	.35
4.0	.72	.59	.50	.67	.56	.47	.59	.50	.42	.51	.43	.37	.44	.38	.32	.28
5.0	.63	.51	.41	.59	.48	.39	.52	.42	.35	.45	.37	.31	.39	.32	.27	.23
6.0	.56	.44	.35	.53	.41	.33	.46	.37	.30	.40	.32	.26	.35	.28	.23	.19
7.0	.50	.38	.30	.47	.36	.28	.42	.32	.26	.36	.28	.23	.31	.25	.20	.16
8.0	.45	.34	.26	.43	.32	.25	.38	.29	.22	.33	.25	.20	.28	.22	.17	.14
9.0	.41	.30	.23	.39	.29	.22	.34	.26	.20	.30	.23	.17	.26	.20	.15	.12
10.0	.38	.27	.20	.35	.26	.19	.31	.23	.17	.28	.20	.15	.24	.18	.14	.11



C Range: 0 - 360DEG
 C Interval: 45.0DEG
 Test Speed: HIGH
 Temperature: 25.3DEG
 Operators:
 Test Date: 2013-03-18

γ Range: 0 - 180DEG
 γ Interval: 1.0DEG
 Test System: EVERFINE GO-2000A_V1 SYSTEM V2.0.276
 Humidity: 65.0%
 Test Distance: 8.920m [K=1.0000]
 Remarks:

WEC AND CCEC

NAME: C37塑料4W拉尾E14	TYPE:	WEIGHT:
DIM.:	SPEC.:	SERIAL No.:
MFR.: MK	SUR.:	PROTECTION ANGLE:

ρ _{cc}	80%			70%			50%			30%			10%			0
ρ _w	50%	30%	10%	50%	30%	10%	50%	30%	10%	50%	30%	10%	50%	30%	10%	0
ρ _{fc}	20%			20%			20%			20%			20%			0
RCR	RCR:Room Cavity Ratio						Wall Exitance Coefficients (WEC)									
0.0																
1.0	.548	.311	.099	.526	.300	.095	.486	.279	.089	.448	.259	.083	.414	.240	.077	
2.0	.459	.252	.077	.440	.242	.075	.403	.224	.070	.369	.207	.065	.338	.191	.060	
3.0	.401	.213	.064	.383	.205	.062	.350	.189	.058	.319	.175	.054	.290	.160	.050	
4.0	.357	.185	.054	.340	.178	.053	.310	.164	.049	.281	.151	.046	.255	.138	.042	
5.0	.321	.164	.047	.307	.157	.046	.279	.145	.043	.252	.133	.040	.228	.122	.037	
6.0	.293	.147	.042	.279	.141	.041	.253	.130	.038	.229	.119	.035	.207	.109	.032	
7.0	.268	.133	.038	.256	.128	.036	.232	.117	.034	.210	.108	.031	.189	.098	.029	
8.0	.248	.121	.034	.236	.116	.033	.214	.107	.031	.194	.098	.028	.175	.090	.026	
9.0	.230	.111	.031	.219	.107	.030	.199	.098	.028	.180	.090	.026	.162	.082	.024	
10.0	.215	.103	.029	.205	.099	.028	.186	.091	.026	.168	.083	.024	.151	.076	.022	

ρ _{cc}	80%			70%			50%			30%			10%			0
ρ _w	50%	30%	10%	50%	30%	10%	50%	30%	10%	50%	30%	10%	50%	30%	10%	0
ρ _{fc}	20%			20%			20%			20%			20%			0
RCR	RCR:Room Cavity Ratio						Ceiling Cavity Exitance Coefficients (CCEC)									
0.0	.550	.550	.550	.470	.470	.470	.321	.321	.321	.184	.184	.184	.059	.059	.059	
1.0	.550	.507	.469	.470	.435	.403	.322	.299	.279	.185	.173	.162	.059	.056	.052	
2.0	.543	.479	.426	.465	.412	.368	.319	.285	.257	.184	.166	.150	.059	.054	.049	
3.0	.534	.459	.400	.458	.396	.347	.314	.275	.243	.181	.161	.143	.058	.052	.047	
4.0	.524	.444	.383	.450	.384	.333	.309	.267	.234	.179	.157	.139	.058	.051	.046	
5.0	.514	.432	.371	.442	.374	.323	.304	.261	.228	.176	.153	.135	.057	.050	.045	
6.0	.505	.422	.363	.434	.366	.316	.299	.256	.224	.174	.151	.133	.056	.049	.044	
7.0	.495	.414	.357	.426	.359	.311	.294	.252	.221	.171	.148	.131	.055	.049	.043	
8.0	.487	.407	.353	.419	.353	.308	.290	.248	.218	.169	.146	.130	.055	.048	.043	
9.0	.479	.401	.349	.412	.348	.305	.286	.245	.216	.166	.145	.129	.054	.047	.043	
10.0	.471	.396	.347	.406	.344	.302	.282	.242	.215	.164	.143	.128	.053	.047	.043	

C Range: 0 - 360DEG
 C Interval: 45.0DEG
 Test Speed: HIGH
 Temperature:25.3DEG
 Operators:
 Test Date:2013-03-18

γ Range: 0 - 180DEG
 γ Interval: 1.0DEG
 Test System:EVERFINE GO-2000A_V1 SYSTEM V2.0.276
 Humidity:65.0%
 Test Distance:8.920m [K=1.0000]
 Remarks:

Uncorrected UGR Table

NAME: C37塑料4W拉尾E14		TYPE:					WEIGHT:				
DIM.:		SPEC.:					SERIAL No.:				
MFR.: MK		SUR.:					PROTECTION ANGLE:				
ceiling/cavity		0.7	0.7	0.5	0.5	0.3	0.7	0.7	0.5	0.5	0.3
walls		0.5	0.3	0.5	0.3	0.3	0.5	0.3	0.5	0.3	0.3
working plane		0.2	0.2	0.2	0.2	0.2	0.2	0.2	0.2	0.2	0.2
Room dimensions		Viewed crosswise					Viewed endwise				
x = 2H y = 2H		14.1	15.4	14.8	16.1	16.9	14.2	15.5	14.8	16.2	17.0
	3H	16.9	18.1	17.6	18.8	19.7	17.1	18.3	17.8	19.0	19.9
	4H	18.4	19.6	19.1	20.3	21.2	18.7	19.8	19.4	20.5	21.4
	6H	20.1	21.2	20.8	21.9	22.8	20.4	21.5	21.2	22.3	23.2
	8H	21.0	22.1	21.8	22.8	23.8	21.4	22.4	22.2	23.2	24.1
	12H	22.1	23.1	22.9	23.9	24.8	22.5	23.5	23.3	24.3	25.3
	4H 2H	15.0	16.1	15.7	16.9	17.8	15.1	16.2	15.8	16.9	17.8
	3H	18.0	19.0	18.7	19.7	20.7	18.1	19.1	18.9	19.9	20.8
	4H	19.6	20.6	20.4	21.3	22.3	19.9	20.8	20.6	21.6	22.5
	6H	21.5	22.3	22.3	23.1	24.1	21.8	22.6	22.6	23.4	24.4
	8H	22.5	23.3	23.3	24.1	25.1	22.9	23.6	23.7	24.5	25.5
	12H	23.7	24.4	24.5	25.2	26.3	24.1	24.8	24.9	25.6	26.7
	8H 4H	20.3	21.1	21.1	21.9	22.9	20.5	21.2	21.3	22.1	23.1
	6H	22.4	23.1	23.3	23.9	25.0	22.7	23.3	23.5	24.2	25.2
	8H	23.6	24.2	24.5	25.1	26.2	23.9	24.5	24.8	25.4	26.4
	12H	25.0	25.6	25.9	26.4	27.5	25.4	25.9	26.3	26.8	27.9
	12H 4H	20.5	21.2	21.3	22.0	23.0	20.6	21.3	21.4	22.2	23.2
	6H	22.7	23.3	23.6	24.2	25.2	22.9	23.5	23.8	24.4	25.4
	8H	24.1	24.6	24.9	25.4	26.5	24.3	24.8	25.2	25.7	26.8
Variations with the observer position at spacings:											
S = 1.0H		+ 0.1 / - 0.1					+ 0.1 / - 0.1				
1.5H		+ 0.2 / - 0.3					+ 0.2 / - 0.3				
2.0H		+ 0.3 / - 0.4					+ 0.3 / - 0.4				

CIE Pub.117 Corrected 254.4 lm Total Lamp Luminous Flux. (8log(F/F0) = -4.8)

C Range: 0 - 360DEG
 C Interval: 45.0DEG
 Test Speed: HIGH
 Temperature: 25.3DEG
 Operators:
 Test Date: 2013-03-18

γ Range: 0 - 180DEG
 γ Interval: 1.0DEG
 Test System: EVERFINE GO-2000A_V1 SYSTEM V2.0.276
 Humidity: 65.0%
 Test Distance: 8.920m [K=1.0000]
 Remarks:

UTILIZATION FACTORS TABLE

NAME: C37塑料4W拉尾E14	TYPE:	WEIGHT:
DIM.:	SPEC.:	SERIAL No.:
MFR.: MK	SUR.:	PROTECTION ANGLE:

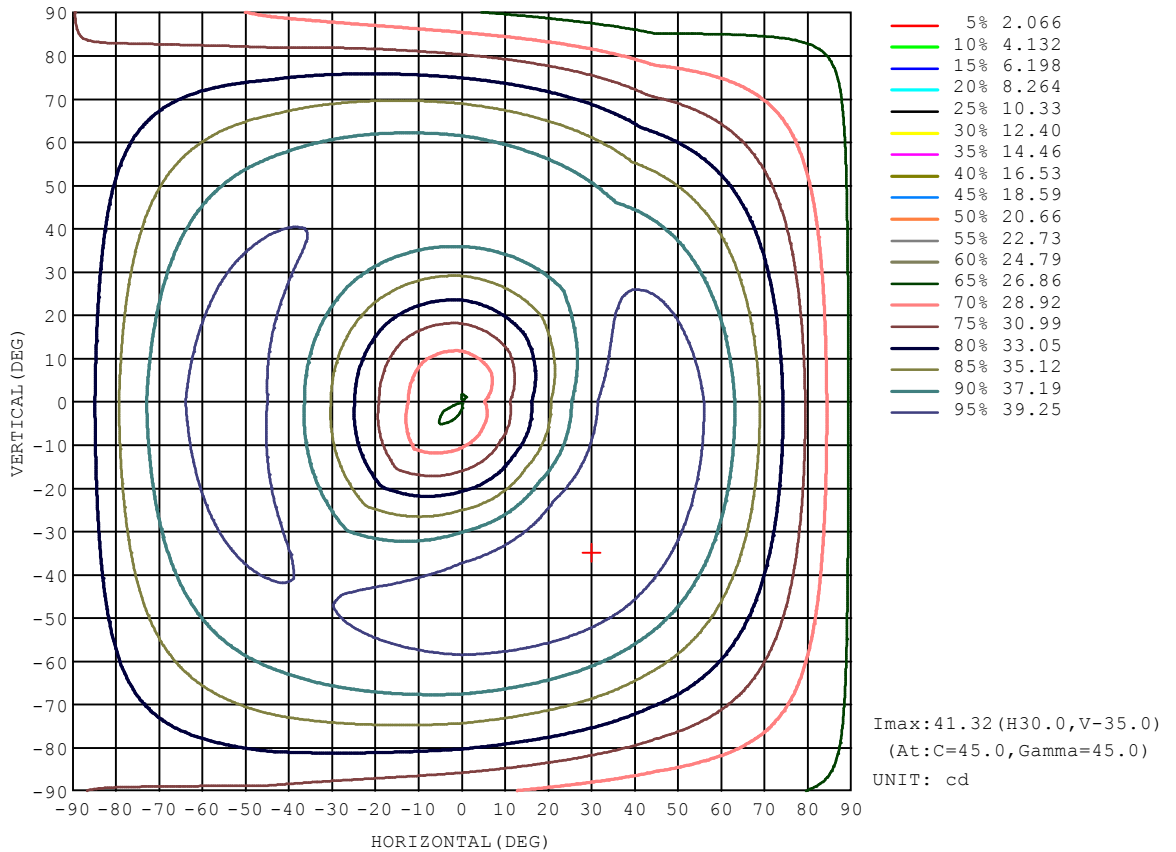
REFLECTANCE										
Ceiling	0.8	0.8	0.8	0.7	0.7	0.7	0.5	0.5	0.5	0
Walls	0.7	0.5	0.3	0.7	0.5	0.3	0.7	0.5	0.3	0
Working plane	0.2	0.2	0.2	0.2	0.2	0.2	0.2	0.2	0.2	0
ROOM INDEX	UTILIZATION FACTORS (PERCENT) $k(RI) \times RCR = 5$									
k = 0.60	51	34	24	49	33	24	46	32	23	14
0.80	62	44	33	59	43	32	55	40	31	20
1.00	72	53	42	68	52	41	62	51	38	25
1.25	81	62	50	77	60	49	69	56	46	31
1.50	87	70	57	83	67	55	75	61	52	35
2.00	97	81	69	92	77	66	83	71	61	43
2.50	104	89	77	98	84	74	88	77	68	47
3.00	109	95	84	103	90	80	92	82	73	52
4.00	116	104	94	109	98	89	97	89	81	58
5.00	120	109	100	113	104	96	101	93	87	62
ROOM INDEX	UF(total)									Direct
According to DIN EN 13032-2 2004			Suspended				SHRNOM = 1.25			

C Range: 0 - 360DEG
 C Interval: 45.0DEG
 Test Speed: HIGH
 Temperature: 25.3DEG
 Operators:
 Test Date: 2013-03-18

γ Range: 0 - 180DEG
 γ Interval: 1.0DEG
 Test System: EVERFINE GO-2000A_V1 SYSTEM V2.0.276
 Humidity: 65.0%
 Test Distance: 8.920m [K=1.0000]
 Remarks:

ISOCANDELA DIAGRAM

NAME: C37塑料4W拉尾E14	TYPE:	WEIGHT:
DIM.:	SPEC.:	SERIAL No.:
MFR.: MK	SUR.:	PROTECTION ANGLE:

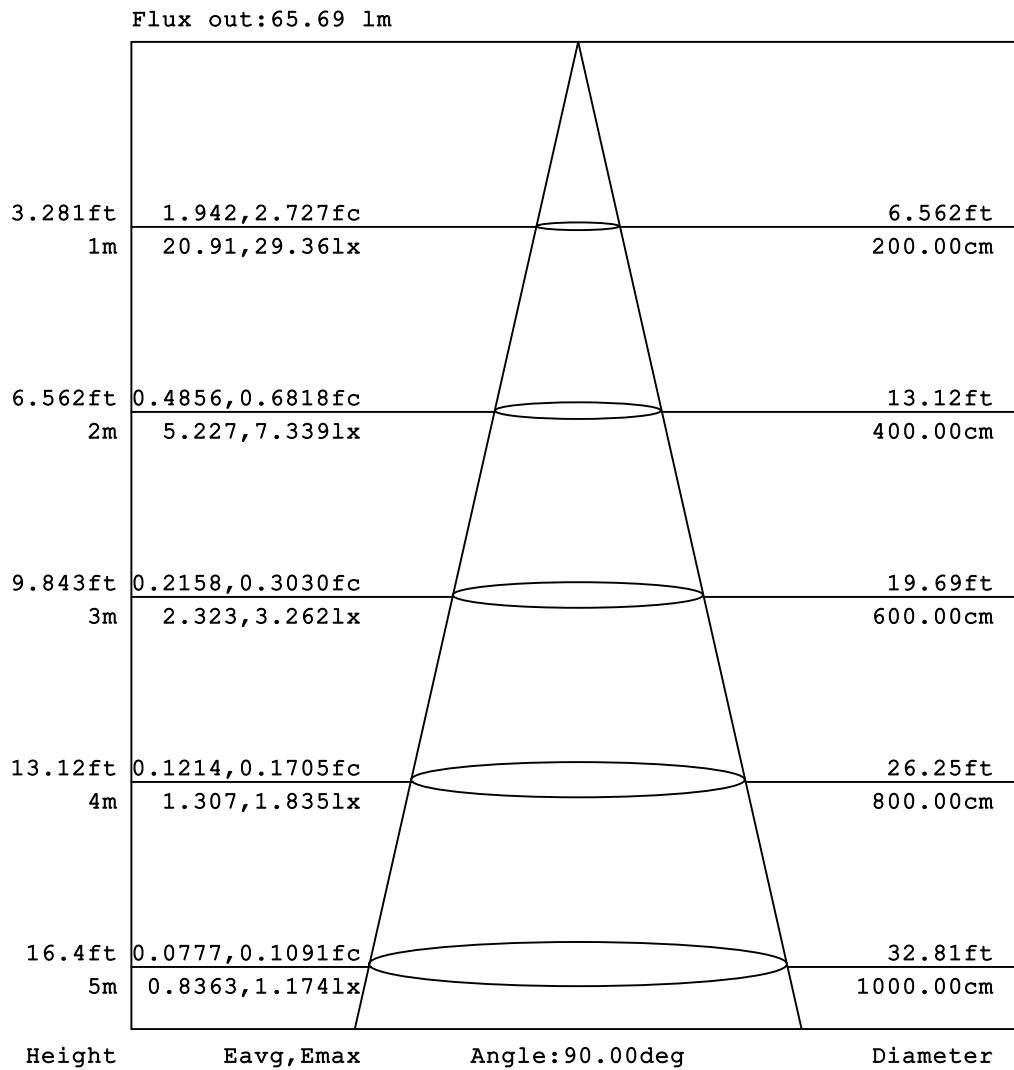


C Range: 0 - 360DEG
 C Interval: 45.0DEG
 Test Speed: HIGH
 Temperature: 25.3DEG
 Operators:
 Test Date: 2013-03-18

γ Range: 0 - 180DEG
 γ Interval: 1.0DEG
 Test System: EVERFINE GO-2000A_V1 SYSTEM V2.0.276
 Humidity: 65.0%
 Test Distance: 8.920m [K=1.0000]
 Remarks:

AAI Figure

NAME: C37塑料4W拉尾E14	TYPE:	WEIGHT:
DIM.:	SPEC.:	SERIAL No.:
MFR.: MK	SUR.:	PROTECTION ANGLE:



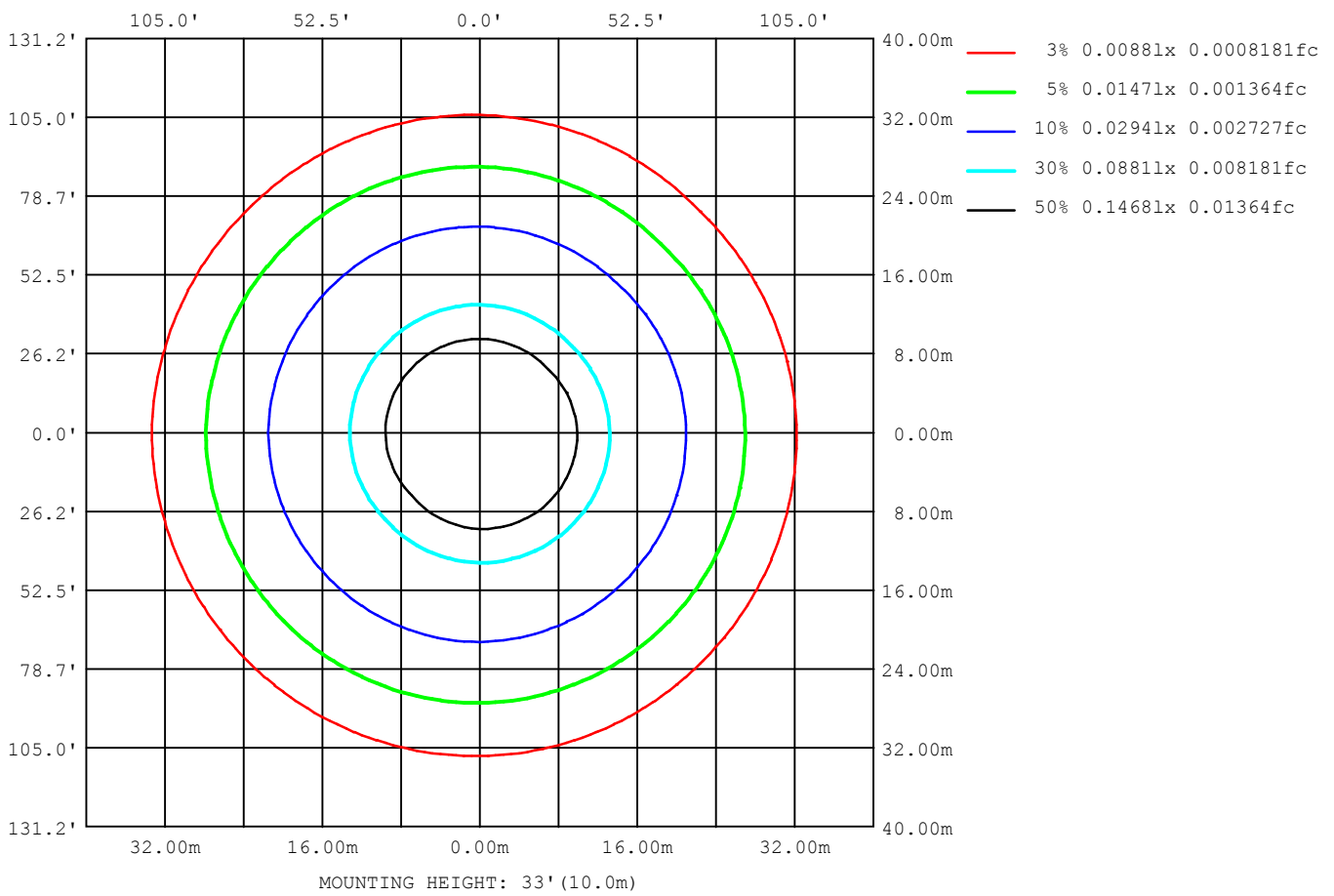
Note: The Curves indicate the illuminated area and the average illumination when the luminaire is at different distance.

C Range: 0 - 360DEG
 C Interval: 45.0DEG
 Test Speed: HIGH
 Temperature: 25.3DEG
 Operators:
 Test Date: 2013-03-18

γ Range: 0 - 180DEG
 γ Interval: 1.0DEG
 Test System: EVERFINE GO-2000A_V1 SYSTEM V2.0.276
 Humidity: 65.0%
 Test Distance: 8.920m [K=1.0000]
 Remarks:

ISOLUX DIAGRAM

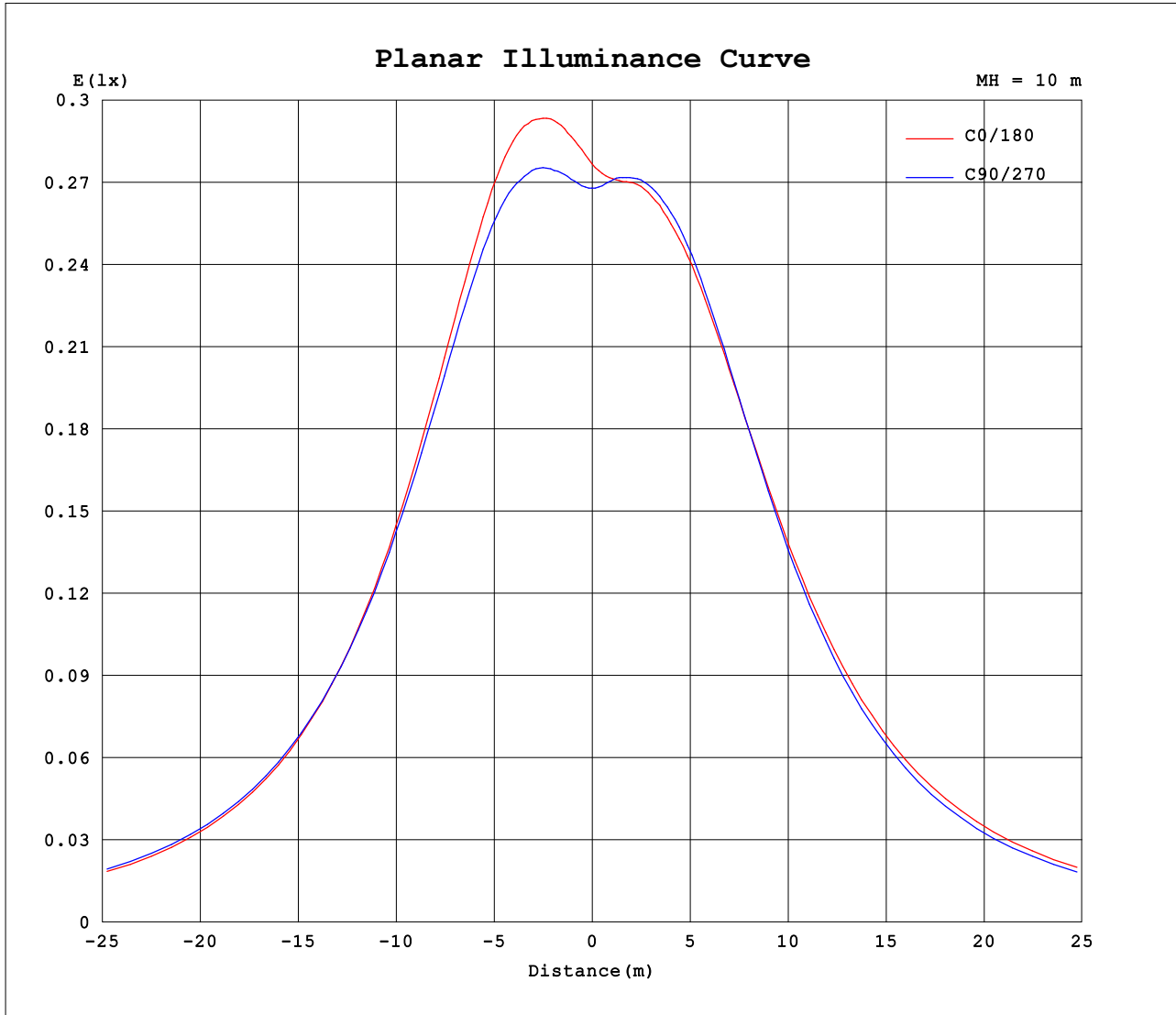
NAME: C37塑料4w拉尾E14	TYPE:	WEIGHT:
DIM.:	SPEC.:	SERIAL No.:
MFR.: MK	SUR.:	PROTECTION ANGLE:



C Range: 0 - 360DEG
 C Interval: 45.0DEG
 Test Speed: HIGH
 Temperature: 25.3DEG
 Operators:
 Test Date: 2013-03-18

γ Range: 0 - 180DEG
 γ Interval: 1.0DEG
 Test System: EVERFINE GO-2000A_V1 SYSTEM V2.0.276
 Humidity: 65.0%
 Test Distance: 8.920m [K=1.0000]
 Remarks:

Planar Illuminance Curve



C Range: 0 - 360DEG
 C Interval: 45.0DEG
 Test Speed: HIGH
 Temperature: 25.3DEG
 Operators:
 Test Date: 2013-03-18

γ Range: 0 - 180DEG
 γ Interval: 1.0DEG
 Test System: EVERFINE GO-2000A_V1 SYSTEM V2.0.276
 Humidity: 65.0%
 Test Distance: 8.920m [K=1.0000]
 Remarks:

LUMINOUS DISTRIBUTION INTENSITY DATA

NAME: C37塑料4W拉尾E14	TYPE:	WEIGHT:
DIM.:	SPEC.:	SERIAL No.:
MFR.: MK	SUR.:	PROTECTION ANGLE:

Table--1

UNIT: cd

C (DEG) \ γ (DEG)	0	45	90	135	180	225	270	315										
0	27.7	27.2	26.8	26.6	27.7	27.2	26.8	26.6										
5	28.9	28.2	27.4	26.5	27.5	27.2	27.3	27.6										
10	30.5	29.9	28.7	27.4	28.3	28.2	28.5	29.0										
15	32.6	32.0	30.6	28.8	29.7	29.6	30.0	30.7										
20	34.9	34.5	32.7	30.4	31.3	31.2	31.7	32.6										
25	37.0	36.9	35.1	32.3	33.1	33.1	33.7	34.6										
30	38.8	39.0	37.1	34.3	35.0	35.1	35.5	36.1										
35	40.1	40.4	38.7	36.0	36.8	36.7	37.0	37.3										
40	40.8	41.2	39.7	37.4	38.2	37.9	38.1	38.1										
45	40.9	41.3	40.2	38.4	39.3	38.8	38.6	38.3										
50	40.5	40.9	40.2	39.0	39.9	39.2	38.7	38.0										
55	39.5	40.0	39.8	39.1	40.1	39.0	38.3	37.3										
60	38.1	38.7	39.0	38.8	39.8	38.4	37.5	36.2										
65	36.5	37.1	37.9	38.2	39.1	37.4	36.3	34.8										
70	34.7	35.4	36.5	37.2	38.0	36.1	34.7	33.2										
75	32.7	33.5	34.9	35.8	36.6	34.4	33.0	31.4										
80	30.7	31.6	33.2	34.3	34.9	32.6	31.1	29.4										
85	28.7	29.6	31.3	32.5	33.0	30.7	29.0	27.4										
90	26.6	27.7	29.4	30.7	31.0	28.7	27.0	25.5										
95	24.6	25.8	27.5	28.7	29.0	26.7	25.0	23.5										
100	22.6	23.9	25.5	26.7	26.9	24.7	23.0	21.6										
105	20.7	22.0	23.6	24.8	24.8	22.7	21.1	19.8										
110	18.9	20.1	21.7	22.8	22.8	20.8	19.3	18.0										
115	17.1	18.3	19.8	20.9	20.8	19.0	17.4	16.2										
120	15.3	16.5	17.9	19.0	18.9	17.2	15.7	14.5										
125	13.6	14.8	16.1	17.1	17.0	15.4	14.0	12.8										
130	11.9	13.0	14.3	15.2	15.1	13.6	12.3	11.2										
135	10.2	11.3	12.5	13.4	13.3	11.9	10.6	9.56										
140	8.67	9.72	10.8	11.6	11.5	10.2	9.02	8.01										
145	7.20	8.17	9.12	9.83	9.67	8.55	7.46	6.57										
150	5.82	6.72	7.57	8.15	7.96	6.95	6.03	5.21										
155	4.52	5.35	6.08	6.59	6.37	5.49	4.66	3.98										
160	3.33	4.06	4.68	5.11	4.90	4.15	3.35	2.71										
165	2.12	2.76	3.38	3.79	3.56	2.74	1.77	1.22										
170	0.26	0.44	1.62	2.31	1.93	0.67	0.31	0.26										
175	0.24	0.24	0.23	0.24	0.24	0.24	0.23	0.24										
180	0.24	0.24	0.20	0.23	0.24	0.24	0.23	0.22										

C Range: 0 - 360DEG
 C Interval: 45.0DEG
 Test Speed: HIGH
 Temperature:25.3DEG
 Operators:
 Test Date:2013-03-18

γ Range: 0 - 180DEG
 γ Interval: 1.0DEG
 Test System:EVERFINE GO-2000A_V1 SYSTEM V2.0.276
 Humidity:65.0%
 Test Distance:8.920m [K=1.0000]
 Remarks: