



V-TAC EXPORTS LIMITEDd

CE-RED TEST REPORT

Prepared For:	V-TAC EXPORTS LIMITEDd ROOM NO.301, KAM ON BUILDING 176A QUEENS ROAD CENTRAL, CERNTRAL, HONGKONG
Product Name:	Wifi smart device
Trade Name:	N/A
Model :	VT-5003, TV-5004, VT-5005, VT-5013, VT-5003-BS, VT-5004-BS, VT-5005-BS
Prepared By :	Shenzhen STL Testing Technology Co., Ltd. Unit C, 4F, Building A, ShengHengji Industrial Park, No. 137 FuYuan 1 Road, Heping Community, Fuyong Street, Baoan District, Shenzhen, China
Test Date:	May. 28, 2019 - June. 03, 2019
Date of Report :	June.03, 2019
Report No.:	STL2019E05029-S12



TEST REPORT EN 60950-1 Information technology equipment – Safety – Part 1: General requirements	
Report reference No.	STL2019E05029-S12
Compiled by (+ signature)	Jolie Li <i>Jolie Li</i>
Approved by (+ signature)	Liuzhe <i>Jolie Li</i>
Testing Laboratory Name	Shenzhen STL Testing Technology Co., Ltd.
Address	Unit C, 4F, Building A, ShengHengji Industrial Park, No. 137 FuYuan 1 Road, HePing Community, Fuyong Street, Baoan District, Shenzhen, China
Testing location	As above
Applicant's Name	V-TAC EXPORTS LIMITEDd
Address	ROOM NO.301, KAM ON BUILDING 176A QUEENS ROAD CENTRAL, CERNTRAL, HONGKONG
Test specification	
Standard	EN 60950-1:2006+A11:2009+A1:2010+A12:2011+A2:2013
Test procedure	N/A
Non-standard test method	N/A
Test Report Form No.	IEC60950_1F
Master TRF	Dated 2014-02
This test report is for the customer shown above and their specific product only. It may not be duplicated or used in part without prior written consent from STL lab.	
Test item description	Wifi smart device
Trademark	N/A
Manufacturer.....	V-TAC EXPORTS LIMITEDd ROOM NO.301, KAM ON BUILDING 176A QUEENS ROAD CENTRAL, CERNTRAL, HONGKONG
Model and/or type reference	VT-5003 (Other models see page 1)
Ratings.....	Input: 230V~50/60Hz, 10A,2200W

Summary of testing:**Testing location:**

Shenzhen STL Testing Technology Co., Ltd.

Unit C, 4F, Building A, ShengHengji Industrial Park, No. 137 FuYuan 1 Road, Heping Community, Fuyong Street, Baoan District, Shenzhen, China

Tests performed (name of test and test clause):

The sample(s) tested complies with the requirements of EN 60950-1.

When determining the test conclusion, the Measurement Uncertainty of test has been considered.

Heating test (4.5):

T_{ma} = 40.0°C (declared by manufacturer)

T_{amb}: 24.2 °C – 25.4 °C

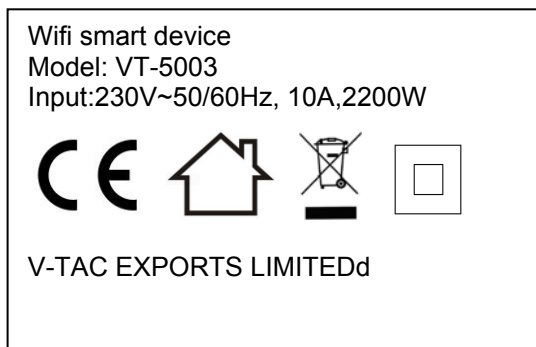
J-type thermocouple used for temperature measurement.

This test report includes:

Annex 1: Photos.

Summary of compliance with National Differences:

Compliance with the National requirements of CENELEC common modification.

Copy of marking plate:

Note:

- These marking plate artworks above may be only a draft.



Test item particulars	
Equipment mobility	<input type="checkbox"/> movable <input type="checkbox"/> hand-held <input type="checkbox"/> transportable <input type="checkbox"/> stationary <input type="checkbox"/> for building-in <input checked="" type="checkbox"/> direct plug-in
Connection to the mains.....	<input checked="" type="checkbox"/> pluggable equipment <input checked="" type="checkbox"/> type A <input type="checkbox"/> type B <input type="checkbox"/> permanent connection <input type="checkbox"/> detachable power supply cord <input type="checkbox"/> non-detachable power supply cord <input type="checkbox"/> not directly connected to the mains
Operating condition	<input checked="" type="checkbox"/> continuous <input type="checkbox"/> rated operating / resting time:
Access location	<input checked="" type="checkbox"/> operator accessible <input type="checkbox"/> restricted access location
Over voltage category (OVC)	<input type="checkbox"/> OVC I <input checked="" type="checkbox"/> OVC II <input type="checkbox"/> OVC III <input type="checkbox"/> OVC IV <input type="checkbox"/> other: No direct connection with mains.
Mains supply tolerance (%) or absolute mains supply values	-10%, +10%
Tested for IT power systems	<input type="checkbox"/> Yes <input checked="" type="checkbox"/> No
IT testing, phase-phase voltage (V)	N/A
Class of equipment	<input type="checkbox"/> Class I <input checked="" type="checkbox"/> Class II <input type="checkbox"/> Class III <input type="checkbox"/> Not classified
Considered current rating (A)	-10%, +10%
Pollution degree (PD)	<input type="checkbox"/> PD 1 <input checked="" type="checkbox"/> PD 2 <input type="checkbox"/> PD 3
IP protection class	IP X0
Altitude during operation (m)	< 2000 m
Altitude of test laboratory (m)	Shenzhen < 2000 m
Mass of equipment (kg)	/
Possible test case verdicts:	
- test case does not apply to the test object	N (N/A)
- test object does meet the requirement	P (Pass)
- test object does not meet the requirement	F (Fail)

**General remarks:**

The test results presented in this report relate only to the object tested.

This report shall not be reproduced, except in full, without the written approval of the Issuing testing laboratory.

"(See Enclosure #)" refers to additional information appended to the report.

"(See appended table)" refers to a table appended to the report.

Note: This TRF includes EN Group Differences together with National Differences and Special National Conditions, if any. All Differences are located in the Appendix to the main body of this TRF.

This document is issued by the company under its General Conditions of Service accessible at www.uni-lab.hk. Attention is drawn to the limitation of liability, indemnification and jurisdiction issues defined therein. Any holder of this document is advised that information contained hereon reflects the Company's findings at the time of its intervention only and within the limits of Client's instructions, if any. The Company's sole responsibility is to its Client and this document does not exonerate parties to a transaction from exercising all their rights and obligations under the transaction documents. Any unauthorized alteration, forgery or falsification of the content or appearance of this document is unlawful and offenders may be prosecuted to the fullest extent of the law.

Unless otherwise stated: (a) the results shown in this document refer only to the sample(s) tested and (b) such sample(s) are retained for 12 months. This document cannot be reproduced except in full, without prior approval of the company.

General product information:

Wifi smart device , powered by mains, housed with plastic enclosure, for indoor use only.

Model difference:

1. All models have same construction and circuit principle; But difference from the model name.
2. The differences do not influence the safety performance of the product.
3. All tests were conducted on the model VT-5003 and the test result was pass.


EN 60950-1			
Clause	Requirement	Remark	Result

1	GENERAL		P
---	----------------	--	---

1.5	Components		P
1.5.1	General		P
	Comply with IEC 60950-1 or relevant component standard	(see appended tables 1.5.1)	P
1.5.2	Evaluation and testing of components	Components that are certified to IEC and /or national standards are used correctly within their ratings. Components not covered by IEC standards are tested under the conditions present in the equipment.	P
1.5.3	Thermal controls		N/A
1.5.4	Transformers	Transformer is suitable for its intended application and comply with the relevant requirements of the standard and particularly Annex C.	P
1.5.5	Interconnecting cables		N/A
1.5.6	Capacitors bridging insulation		P
1.5.7	Resistors bridging insulation	No bridging resistors.	N/A
1.5.7.1	Resistors bridging functional, basic or supplementary insulation		N/A
1.5.7.2	Resistors bridging double or reinforced insulation between a.c. mains and other circuits		N/A
1.5.7.3	Resistors bridging double or reinforced insulation between a.c. mains and antenna or coaxial cable		N/A
1.5.8	Components in equipment for IT power systems		N/A
1.5.9	Surge suppressors		N/A
1.5.9.1	General		N/A
1.5.9.2	Protection of VDRs		N/A
1.5.9.3	Bridging of functional insulation by a VDR		N/A
1.5.9.4	Bridging of basic insulation by a VDR		N/A
1.5.9.5	Bridging of supplementary, double or reinforced insulation by a VDR		N/A

1.6	Power interface		P
1.6.1	AC power distribution systems	TN power system.	P
1.6.2	Input current	(see appended table 1.6.2)	P
1.6.3	Voltage limit of hand-held equipment	This appliance is not a hand-held equipment.	N/A
1.6.4	Neutral conductor		N/A



EN 60950-1			
Clause	Requirement	Remark	Result
1.7	Marking and instructions		P
1.7.1	Power rating and identification markings		P
1.7.1.1	Power rating marking		P
	Multiple mains supply connections.....:		N/A
	Rated voltage(s) or voltage range(s) (V)	230V	P
	Symbol for nature of supply, for d.c. only		N/A
	Rated frequency or rated frequency range (Hz) ...:	50/60Hz	P
	Rated current (mA or A)	10A(Max)	P
1.7.1.2	Identification markings		P
	Manufacturer's name or trade-mark or identification mark	wenzhou trust mould factory	P
	Model identification or type reference	VT-5003	P
	Symbol for Class II equipment only		P
	Other markings and symbols	Additional symbols or marking does not give rise to misunderstanding.	P
1.7.2	Safety instructions and marking	Safety instruction provided.	P
1.7.2.1	General		P
1.7.2.2	Disconnect devices		P
1.7.2.3	Overcurrent protective device		N/A
1.7.2.4	IT power distribution systems	For TN system only.	N/A
1.7.2.5	Operator access with a tool	No operator accessible area which needs to be accessed by the use of a tool.	N/A
1.7.2.6	Ozone	No ozone produced.	N/A
1.7.3	Short duty cycles	Equipment is designed for continuous operation.	N/A
1.7.4	Supply voltage adjustment	Full range voltage design, no necessary adjustment.	N/A
	Methods and means of adjustment; reference to installation instructions		N/A
1.7.5	Power outlets on the equipment	No standard power outlet	N/A
1.7.6	Fuse identification (marking, special fusing characteristics, cross-reference)	F1	P
1.7.7	Wiring terminals		N/A
1.7.7.1	Protective earthing and bonding terminals		N/A
1.7.7.2	Terminals for a.c. mains supply conductors		N/A
1.7.7.3	Terminals for d.c. mains supply conductors	No such terminals provided.	N/A
1.7.8	Controls and indicators		N/A



EN 60950-1			
Clause	Requirement	Remark	Result
1.7.8.1	Identification, location and marking		N/A
1.7.8.2	Colours		N/A
1.7.8.3	Symbols according to IEC 60417		N/A
1.7.8.4	Markings using figures		N/A
1.7.9	Isolation of multiple power sources	Single power source.	N/A
1.7.10	Thermostats and other regulating devices	Not used.	N/A
1.7.11	Durability	The label was subjected to the permanence of marking test. The label was rubbed with cloth soaked with water for 15 sec. And then again for 15 sec. With the cloth soaked with petroleum spirit . After rubbing test there was no damage to the label. The marking on the label did not fade. There was neither curling nor lifting of the label edge.	P
1.7.12	Removable parts	No removable parts provided.	N/A
1.7.13	Replaceable batteries	No battery.	N/A
	Language(s)		—
1.7.14	Equipment for restricted access locations	Not limited for use in restricted access locations.	N/A

2	PROTECTION FROM HAZARDS		P
2.1	Protection from electric shock and energy hazards		P
2.1.1	Protection in operator access areas	See below.	P
2.1.1.1	Access to energized parts	No access with test finger and test pin to any parts with only basic insulation to ELV or hazardous voltage. Any hazardous parts accessible are unlikely.	P
	Test by inspection		P
	Test with test finger (Figure 2A)		P
	Test with test pin (Figure 2B)		P
	Test with test probe (Figure 2C)	No TNV circuits.	N/A
2.1.1.2	Battery compartments	No battery compartments	N/A
2.1.1.3	Access to ELV wiring	No ELV wiring in operator accessible area.	N/A
	Working voltage (V _{peak} or V _{rms}); minimum distance through insulation (mm)		—
2.1.1.4	Access to hazardous voltage circuit wiring	No hazardous voltage wiring in operator accessible area.	N/A
2.1.1.5	Energy hazards	No accessible energy hazards	P



EN 60950-1			
Clause	Requirement	Remark	Result
2.1.1.6	Manual controls	No such device	N/A
2.1.1.7	Discharge of capacitors in equipment		N/A
	Measured voltage (V); time-constant (s)		—
2.1.1.8	Energy hazards – d.c. mains supply		N/A
	a) Capacitor connected to the d.c. mains supply . :		N/A
	b) Internal battery connected to the d.c. mains supply		N/A
2.1.1.9	Audio amplifiers		N/A
2.1.2	Protection in service access areas	No maintenance work in operation mode necessary.	N/A
2.1.3	Protection in restricted access locations	The unit is not limited to be used in restricted access locations.	N/A
2.2	SELV circuits		P
2.2.1	General requirements		P
2.2.2	Voltages under normal conditions (V)	Within SELV limits	P
2.2.3	Voltages under fault conditions (V)	Within SELV limits	P
2.2.4	Connection of SELV circuits to other circuits	Connect to SELV circuits only	P
2.3	TNV circuits		N/A
2.3.1	Limits	No TNV circuits.	N/A
	Type of TNV circuits		—
2.3.2	Separation from other circuits and from accessible parts		N/A
2.3.2.1	General requirements		N/A
2.3.2.2	Protection by basic insulation		N/A
2.3.2.3	Protection by earthing		N/A
2.3.2.4	Protection by other constructions		N/A
2.3.3	Separation from hazardous voltages		N/A
	Insulation employed.....		—
2.3.4	Connection of TNV circuits to other circuits		N/A
	Insulation employed.....		—
2.3.5	Test for operating voltages generated externally		N/A
2.4	Limited current circuits		P
2.4.1	General requirements		P
2.4.2	Limit values		P
	Frequency (Hz).....		—
	Measured current (mA).....		—

EN 60950-1			
Clause	Requirement	Remark	Result
	Measured voltage (V)		—
	Measured circuit capacitance (nF or μ F).....		—
2.4.3	Connection of limited current circuits to other circuits		N/A

2.5	Limited power sources		N/A
	a) Inherently limited output		N/A
	b) Impedance limited output		N/A
	c) Regulating network limited output under normal operating and single fault condition		N/A
	d) Overcurrent protective device limited output		N/A
	Max. output voltage (V), max. output current (A), max. apparent power (VA)		—
	Current rating of overcurrent protective device (A) ..		—
	Use of integrated circuit (IC) current limiters		N/A

2.6	Provisions for earthing and bonding		N/A
2.6.1	Protective earthing		N/A
2.6.2	Functional earthing		N/A
2.6.3	Protective earthing and protective bonding conductors		N/A
2.6.3.1	General		N/A
2.6.3.2	Size of protective earthing conductors		N/A
	Rated current (A), cross-sectional area (mm^2), AWG		—
2.6.3.3	Size of protective bonding conductors		N/A
	Rated current (A), cross-sectional area (mm^2), AWG		—
	Protective current rating (A), cross-sectional area (mm^2), AWG		—
2.6.3.4	Resistance of earthing conductors and their terminations; resistance (Ω), voltage drop (V), test current (A), duration (min)		N/A
2.6.3.5	Colour of insulation		N/A
2.6.4	Terminals		N/A
2.6.4.1	General		N/A
2.6.4.2	Protective earthing and bonding terminals		N/A
	Rated current (A), type, nominal thread diameter (mm)		—
2.6.4.3	Separation of the protective earthing conductor from protective bonding conductors		N/A
2.6.5	Integrity of protective earthing		N/A

EN 60950-1			
Clause	Requirement	Remark	Result

2.6.5.1	Interconnection of equipment		N/A
2.6.5.2	Components in protective earthing conductors and protective bonding conductors		N/A
2.6.5.3	Disconnection of protective earth		N/A
2.6.5.4	Parts that can be removed by an operator		N/A
2.6.5.5	Parts removed during servicing		N/A
2.6.5.6	Corrosion resistance		N/A
2.6.5.7	Screws for protective bonding		N/A
2.6.5.8	Reliance on telecommunication network or cable distribution system		N/A

2.7	Overcurrent and earth fault protection in primary circuits		P
2.7.1	Basic requirements	The equipment relies on fuse resistor of the wall outlet protection of the building installation in regard to L to N short-circuits. A build-in fuse resistor or fusible resistor provided as overcurrent protection device (see 5.3).	P
	Instructions when protection relies on building installation	Not applicable for pluggable equipment type A.	N/A
2.7.2	Faults not simulated in 5.3.7		N/A
2.7.3	Short-circuit backup protection		P
2.7.4	Number and location of protective devices		P
2.7.5	Protection by several devices		N/A
2.7.6	Warning to service personnel.....	No service work in operation mode necessary.	N/A

2.8	Safety interlocks		N/A
2.8.1	General principles	No safety interlock.	N/A
2.8.2	Protection requirements		N/A
2.8.3	Inadvertent reactivation		N/A
2.8.4	Fail-safe operation		N/A
	Protection against extreme hazard		N/A
2.8.5	Moving parts		N/A
2.8.6	Overriding		N/A
2.8.7	Switches, relays and their related circuits		N/A
2.8.7.1	Separation distances for contact gaps and their related circuits (mm)		N/A
2.8.7.2	Overload test		N/A



EN 60950-1			
Clause	Requirement	Remark	Result
2.8.7.3	Endurance test		N/A
2.8.7.4	Electric strength test		N/A
2.8.8	Mechanical actuators		N/A

2.9	Electrical insulation		P
2.9.1	Properties of insulating materials	Natural rubber, asbestos or hygroscopic materials are not used.	P
2.9.2	Humidity conditioning	48h	P
	Relative humidity (%), temperature (°C)	30°C, 95%	—
2.9.3	Grade of insulation	The adequate levels of safety insulation is provided and maintained to comply with the requirements of this standard.	P
2.9.4	Separation from hazardous voltages	SELV output circuit separated from hazardous voltages by double insulation or reinforced insulation	P
	Method(s) used	Method 1	—

2.10	Clearances, creepage distances and distances through insulation		P
2.10.1	General	See 2.10.3, 2.10.4, 2.10.5.	P
2.10.1.1	Frequency	50/60Hz	P
2.10.1.2	Pollution degrees	Pollution degree 2	P
2.10.1.3	Reduced values for functional insulation	See cl. 5.3.4	P
2.10.1.4	Intervening unconnected conductive parts	Considered	P
2.10.1.5	Insulation with varying dimensions		N/A
2.10.1.6	Special separation requirements		N/A
2.10.1.7	Insulation in circuits generating starting pulses		N/A
2.10.2	Determination of working voltage	(see appended table 2.10.2)	P
2.10.2.1	General	The rms and the peak voltage were measured with unit connected to a 240V TN power system. The input neutral and secondary minus pole were connected during measurement. Pollution Degree 2 and Overvoltage Category II considered.	P
2.10.2.2	RMS working voltage		P
2.10.2.3	Peak working voltage		P
2.10.3	Clearances		P
2.10.3.1	General		P



EN 60950-1			
Clause	Requirement	Remark	Result
2.10.3.2	Mains transient voltages		P
	a) AC mains supply	2500V	P
	b) Earthed d.c. mains supplies		N/A
	c) Unearthed d.c. mains supplies		N/A
	d) Battery operation		N/A
2.10.3.3	Clearances in primary circuits	(see appended table 2.10.3 and 2.10.4)	P
2.10.3.4	Clearances in secondary circuits		N/A
2.10.3.5	Clearances in circuits having starting pulses		N/A
2.10.3.6	Transients from a.c. mains supply		N/A
2.10.3.7	Transients from d.c. mains supply		N/A
2.10.3.8	Transients from telecommunication networks and cable distribution systems		N/A
2.10.3.9	Measurement of transient voltage levels		N/A
	a) Transients from a mains supply		N/A
	For an a.c. mains supply		N/A
	For a d.c. mains supply		N/A
	b) Transients from a telecommunication network :		N/A
2.10.4	Creepage distances	(see appended table 2.10.3 and 2.10.4)	P
2.10.4.1	General		P
2.10.4.2	Material group and comparative tracking index		P
	CTI tests	Material group IIIb is assumed to be used	—
2.10.4.3	Minimum creepage distances	(see appended table 2.10.3 and 2.10.4)	P
2.10.5	Solid insulation	(see appended table 2.10.3 and 2.10.4)	P
2.10.5.1	General		P
2.10.5.2	Distances through insulation	(see appended table 2.10.5)	P
2.10.5.3	Insulating compound as solid insulation		N/A
2.10.5.4	Semiconductor devices		N/A
2.10.5.5.	Cemented joints		N/A
2.10.5.6	Thin sheet material – General	Insulation tapes provided which mounted on transformer.	P
2.10.5.7	Separable thin sheet material	Used in transformer	P
	Number of layers (pcs)	2 layers wrapped on bottom core and around external transformer for reinforced insulation.	—
2.10.5.8	Non-separable thin sheet material		N/A
2.10.5.9	Thin sheet material – standard test procedure		N/A
	Electric strength test	(see appended table 2.10.5)	—



EN 60950-1			
Clause	Requirement	Remark	Result
2.10.5.10	Thin sheet material – alternative test procedure		P
	Electric strength test	(see appended table 2.10.5)	—
2.10.5.11	Insulation in wound components	Triple insulated wire used as secondary winding of transformer T1.	P
2.10.5.12	Wire in wound components		P
	Working voltage	>71V peak	P
	a) Basic insulation not under stress		N/A
	b) Basic, supplementary, reinforced insulation		P
	c) Compliance with Annex U	Approved TIW wire used, comply with Annex U, three layers	P
	Two wires in contact inside wound component; angle between 45° and 90°	Physical separation in the form of insulating sheet material to relieve mechanical stress at the crossover point.	P
2.10.5.13	Wire with solvent-based enamel in wound components		N/A
	Electric strength test		—
	Routine test		N/A
2.10.5.14	Additional insulation in wound components		N/A
	Working voltage		N/A
	- Basic insulation not under stress		N/A
	- Supplementary, reinforced insulation		N/A
2.10.6	Construction of printed boards		P
2.10.6.1	Uncoated printed boards		P
2.10.6.2	Coated printed boards		N/A
2.10.6.3	Insulation between conductors on the same inner surface of a printed board		N/A
2.10.6.4	Insulation between conductors on different layers of a printed board		N/A
	Distance through insulation		N/A
	Number of insulation layers (pcs).....		N/A
2.10.7	Component external terminations		N/A
2.10.8	Tests on coated printed boards and coated components		N/A
2.10.8.1	Sample preparation and preliminary inspection		N/A
2.10.8.2	Thermal conditioning		N/A
2.10.8.3	Electric strength test		N/A
2.10.8.4	Abrasion resistance test		N/A
2.10.9	Thermal cycling		N/A
2.10.10	Test for Pollution Degree 1 environment and insulating compound		N/A



EN 60950-1			
Clause	Requirement	Remark	Result

2.10.11	Tests for semiconductor devices and cemented joints		N/A
2.10.12	Enclosed and sealed parts		N/A

3	WIRING, CONNECTIONS AND SUPPLY		P
3.1	General		P
3.1.1	Current rating and overcurrent protection		P
3.1.2	Protection against mechanical damage		P
3.1.3	Securing of internal wiring		P
3.1.4	Insulation of conductors		N/A
3.1.5	Beads and ceramic insulators	Not used	N/A
3.1.6	Screws for electrical contact pressure	No screws used.	N/A
3.1.7	Insulating materials in electrical connections	Contact pressure is not transmitted through insulating material.	N/A
3.1.8	Self-tapping and spaced thread screws	No screws used.	N/A
3.1.9	Termination of conductors		N/A
	10 N pull test		N/A
3.1.10	Sleeving on wiring		N/A

3.2	Connection to a mains supply		P
3.2.1	Means of connection		P
3.2.1.1	Connection to an a.c. mains supply		P
3.2.1.2	Connection to a d.c. mains supply		N/A
3.2.2	Multiple supply connections	Single supply	N/A
3.2.3	Permanently connected equipment		N/A
	Number of conductors, diameter of cable and conduits (mm)		—
3.2.4	Appliance inlets		N/A
3.2.5	Power supply cords		N/A
3.2.5.1	AC power supply cords		N/A
	Type		—
	Rated current (A), cross-sectional area (mm ²), AWG		—
3.2.5.2	DC power supply cords		N/A
3.2.6	Cord anchorages and strain relief		N/A
	Mass of equipment (kg), pull (N)		—
	Longitudinal displacement (mm)		—
3.2.7	Protection against mechanical damage		N/A
3.2.8	Cord guards		N/A



EN 60950-1			
Clause	Requirement	Remark	Result

	Diameter or minor dimension D (mm); test mass (g)		—
	Radius of curvature of cord (mm)		—
3.2.9	Supply wiring space		N/A

3.3	Wiring terminals for connection of external conductors		N/A
3.3.1	Wiring terminals		N/A
3.3.2	Connection of non-detachable power supply cords		N/A
3.3.3	Screw terminals		N/A
3.3.4	Conductor sizes to be connected		N/A
	Rated current (A), cord/cable type, cross-sectional area (mm ²)		—
3.3.5	Wiring terminal sizes		N/A
	Rated current (A), type, nominal thread diameter (mm)		—
3.3.6	Wiring terminal design		N/A
3.3.7	Grouping of wiring terminals		N/A
3.3.8	Stranded wire		N/A

3.4	Disconnection from the mains supply		P
3.4.1	General requirement		P
3.4.2	Disconnect devices		P
3.4.3	Permanently connected equipment	Not permanently connected equipment.	N/A
3.4.4	Parts which remain energized		N/A
3.4.5	Switches in flexible cords	No switch used.	N/A
3.4.6	Number of poles - single-phase and d.c. equipment	Both poles disconnected simultaneously	P
3.4.7	Number of poles - three-phase equipment	Single phase equipment	N/A
3.4.8	Switches as disconnect devices		N/A
3.4.9	Plugs as disconnect devices		N/A
3.4.10	Interconnected equipment		N/A
3.4.11	Multiple power sources		N/A

3.5	Interconnection of equipment		P
3.5.1	General requirements	See below.	P
3.5.2	Types of interconnection circuits	SELV circuits and limited current circuits	P
3.5.3	ELV circuits as interconnection circuits	No ELV interconnection.	N/A
3.5.4	Data ports for additional equipment		N/A



EN 60950-1			
Clause	Requirement	Remark	Result

4	PHYSICAL REQUIREMENTS		P
4.1	Stability		N/A
	Angle of 10°		N/A
	Test force (N)		N/A

4.2	Mechanical strength		P
4.2.1	General	See below. After tests, unit complies with the requirements of sub-clauses 2.1.1, and 2.10.	P
	Rack-mounted equipment.	(see Annex DD)	N/A
4.2.2	Steady force test, 10 N	10 N applied to all components other than enclosure.	P
4.2.3	Steady force test, 30 N	No internal enclosure.	N/A
4.2.4	Steady force test, 250 N	250 N applied to outer enclosure. No energy or other hazards.	P
4.2.5	Impact test		N/A
	Fall test		N/A
	Swing test		N/A
4.2.6	Drop test; height (mm)	1000mm, no damaged	P
4.2.7	Stress relief test	77°C, 7h	P
4.2.8	Cathode ray tubes	No CRT provided.	N/A
	Picture tube separately certified	(see separate test report or attached certificate)	N/A
4.2.9	High pressure lamps	No high pressure lamps provided.	N/A
4.2.10	Wall or ceiling mounted equipment; force (N)		N/A
4.2.11	Rotating solid media		N/A
	Test to cover on the door.....		N/A

4.3	Design and construction		P
4.3.1	Edges and corners	Edges and corners of the enclosure are rounded.	P
4.3.2	Handles and manual controls; force (N).....		N/A
4.3.3	Adjustable controls	Full range voltage design, no controls provided.	N/A
4.3.4	Securing of parts	Mechanical fixings in such a way designed that they will withstand mechanical stress occurring in normal use.	P



EN 60950-1			
Clause	Requirement	Remark	Result

4.3.5	Connection by plugs and sockets		N/A
4.3.6	Direct plug-in equipment		P
	Torque	<0.25N.m	—
	Compliance with the relevant mains plug standard		P
4.3.7	Heating elements in earthed equipment	No heating elements provided.	N/A
4.3.8	Batteries	No battery	N/A
	- Overcharging of a rechargeable battery		N/A
	- Unintentional charging of a non-rechargeable battery		N/A
	- Reverse charging of a rechargeable battery		N/A
	- Excessive discharging rate for any battery		N/A
4.3.9	Oil and grease	No oil or grease provided.	N/A
4.3.10	Dust, powders, liquids and gases		N/A
4.3.11	Containers for liquids or gases	No container for liquids or gases provided.	N/A
4.3.12	Flammable liquids	No flammable liquids provided.	N/A
	Quantity of liquid (l)		N/A
	Flash point (°C)		N/A
4.3.13	Radiation	No radiation.	N/A
4.3.13.1	General		N/A
4.3.13.2	Ionizing radiation		N/A
	Measured radiation (pA/kg)		—
	Measured high-voltage (kV)		—
	Measured focus voltage (kV)		—
	CRT markings		—
4.3.13.3	Effect of ultraviolet (UV) radiation on materials		N/A
	Part, property, retention after test, flammability classification		N/A
4.3.13.4	Human exposure to ultraviolet (UV) radiation		N/A
4.3.13.5	Lasers (including laser diodes) and LEDs		N/A
4.3.13.5.1	Lasers (including laser laser diodes)		N/A
	Laser class		—
4.3.13.5.2	Light emitting diodes (LEDs)		N/A
4.3.13.6	Other types		N/A

4.4	Protection against hazardous moving parts		N/A
4.4.1	General	No hazardous moving parts.	N/A
4.4.2	Protection in operator access areas		N/A



EN 60950-1			
Clause	Requirement	Remark	Result

	Household and home/office document/media shredders		N/A
4.4.3	Protection in restricted access locations		N/A
4.4.4	Protection in service access areas		N/A
4.4.5	Protection against moving fan blades		N/A
4.4.5.1	General		N/A
	a) Not considered to cause pain or injury.....:		N/A
	b) Is considered to cause pain, not injury.:		N/A
	c) Considered to cause injury.....:		N/A
4.4.5.2	Protection for users		N/A
	Use of symbol or warning		N/A
4.4.5.3	Protection for service persons		N/A
	Use of symbol or warning		N/A

4.5	Thermal requirements		P
4.5.1	General		P
4.5.2	Temperature tests		P
	Normal load condition per Annex L		—
4.5.3	Temperature limits for materials	(see appended table 4.5)	P
4.5.4	Touch temperature limits	(see appended table 4.5)	P
4.5.5	Resistance to abnormal heat	(see appended table 4.5.5)	P

4.6	Openings in enclosures		N/A
4.6.1	Top and side openings		N/A
	Dimensions (mm)		—
4.6.2	Bottoms of fire enclosures		N/A
	Construction of the bottom, dimensions (mm) ...:		—
4.6.3	Doors or covers in fire enclosures		N/A
4.6.4	Openings in transportable equipment		N/A
4.6.4.1	Constructional design measures		N/A
	Dimensions (mm)		—
4.6.4.2	Evaluation measures for larger openings		N/A
4.6.4.3	Use of metallized parts		N/A
4.6.5	Adhesives for constructional purposes		N/A
	Conditioning temperature (°C), time (weeks).....:		—

4.7	Resistance to fire		P
4.7.1	Reducing the risk of ignition and spread of flame		P
	Method 1, selection and application of components wiring and materials	(see appended table 4.7)	P



EN 60950-1			
Clause	Requirement	Remark	Result

	Method 2, application of all of simulated fault condition tests		N/A
4.7.2	Conditions for a fire enclosure		P
4.7.2.1	Parts requiring a fire enclosure	Fire enclosure used, and it covers all parts.	P
4.7.2.2	Parts not requiring a fire enclosure		N/A
4.7.3	Materials		P
4.7.3.1	General	PCB rated accordingly. See appended table 1.5.1 for details	P
4.7.3.2	Materials for fire enclosures	Enclosure:V-0	P
4.7.3.3	Materials for components and other parts outside fire enclosures		N/A
4.7.3.4	Materials for components and other parts inside fire enclosures	PCB rated V-0. See appended table 1.5.1 for details. Internal components except small parts are V-2 or better.	P
4.7.3.5	Materials for air filter assemblies	No air filters assemblies.	N/A
4.7.3.6	Materials used in high-voltage components	No high voltage component.	N/A

5	ELECTRICAL REQUIREMENTS AND SIMULATED ABNORMAL CONDITIONS		P
5.1	Touch current and protective conductor current		P
5.1.1	General	(see appended Table 5.1)	P
5.1.2	Configuration of equipment under test (EUT)		P
5.1.2.1	Single connection to an a.c. mains supply		P
5.1.2.2	Redundant multiple connections to an a.c. mains supply		N/A
5.1.2.3	Simultaneous multiple connections to an a.c. mains supply		N/A
5.1.3	Test circuit	Equipment of figure 5A used.	P
5.1.4	Application of measuring instrument	Using measuring instrument in annex D.	P
5.1.5	Test procedure	The touch current was measured from mains to output connector and to metal enclosure.	P
5.1.6	Test measurements	See appended table 5.1.6	P
	Supply voltage (V)		—
	Measured touch current (mA)		—
	Max. allowed touch current (mA)		—
	Measured protective conductor current (mA)		—
	Max. allowed protective conductor current (mA) ...		—
5.1.7	Equipment with touch current exceeding 3,5 mA		N/A

EN 60950-1			
Clause	Requirement	Remark	Result
5.1.7.1	General		N/A
5.1.7.2	Simultaneous multiple connections to the supply		N/A
5.1.8	Touch currents to telecommunication networks and cable distribution systems and from telecommunication networks	No TNV circuits.	N/A
5.1.8.1	Limitation of the touch current to a telecommunication network or to a cable distribution system		N/A
	Supply voltage (V)		—
	Measured touch current (mA)		—
	Max. allowed touch current (mA)		—
5.1.8.2	Summation of touch currents from telecommunication networks	No TNV circuits.	N/A
	a) EUT with earthed telecommunication ports		N/A
	b) EUT whose telecommunication ports have no reference to protective earth		N/A

5.2	Electric strength		P
5.2.1	General	(see appended table 5.2)	P
5.2.2	Test procedure		P

5.3	Abnormal operating and fault conditions		P
5.3.1	Protection against overload and abnormal operation	(see appended table 5.3)	P
5.3.2	Motors		N/A
5.3.3	Transformers	(see appended Annex C)	P
5.3.4	Functional insulation	Method c). Test results see appended table 5.3.	P
5.3.5	Electromechanical components	No electromechanical component provided.	N/A
5.3.6	Audio amplifiers in ITE		N/A
5.3.7	Simulation of faults		P
5.3.8	Unattended equipment	None of the listed components was provided.	N/A
5.3.9	Compliance criteria for abnormal operating and fault conditions	No fire propagated beyond the equipment. No molten metal was emitted. Electric Strength tests performed after abnormal and fault tests.	P
5.3.9.1	During the tests	No fire, emission of molten metal or deformation was noted during the tests.	P
5.3.9.2	After the tests	Electric Strength tests performed after abnormal and fault tests.	P

EN 60950-1			
Clause	Requirement	Remark	Result

6	CONNECTION TO TELECOMMUNICATION NETWORKS <i>No connection to telecommunication networks</i>		N/A
6.1	Protection of telecommunication network service persons, and users of other equipment connected to the network, from hazards in the equipment		N/A
6.1.1	Protection from hazardous voltages		N/A
6.1.2	Separation of the telecommunication network from earth		N/A
6.1.2.1	Requirements	(see appended table 5.2)	N/A
	Supply voltage (V)		—
	Current in the test circuit (mA)		—
6.1.2.2	Exclusions		N/A

6.2	Protection of equipment users from overvoltages on telecommunication networks		N/A
6.2.1	Separation requirements		N/A
6.2.2	Electric strength test procedure		N/A
6.2.2.1	Impulse test		N/A
6.2.2.2	Steady-state test		N/A
6.2.2.3	Compliance criteria		N/A

6.3	Protection of the telecommunication wiring system from overheating		N/A
	Max. output current (A)		—
	Current limiting method		—

7	CONNECTION TO CABLE DISTRIBUTION SYSTEMS <i>No connection to cable distribution systems</i>		N/A
7.1	General		N/A
7.2	Protection of cable distribution system service persons, and users of other equipment connected to the system, from hazardous voltages in the equipment		N/A
7.3	Protection of equipment users from overvoltages on the cable distribution system		N/A
7.4	Insulation between primary circuits and cable distribution systems		N/A
7.4.1	General		N/A
7.4.2	Voltage surge test		N/A
7.4.3	Impulse test		N/A

A	ANNEX A, TESTS FOR RESISTANCE TO HEAT AND FIRE		N/A
A.1	Flammability test for fire enclosures of movable equipment having a total mass exceeding 18 kg, and of stationary equipment (see 4.7.3.2)		N/A
A.1.1	Samples.....		—



EN 60950-1			
Clause	Requirement	Remark	Result
	Wall thickness (mm).....:		—
A.1.2	Conditioning of samples; temperature (°C)		N/A
A.1.3	Mounting of samples		N/A
A.1.4	Test flame (see IEC 60695-11-3)		N/A
	Flame A, B, C or D		—
A.1.5	Test procedure		N/A
A.1.6	Compliance criteria		N/A
	Sample 2 burning time (s).....:		—
	Sample 3 burning time (s).....:		—
A.2	Flammability test for fire enclosures of movable equipment having a total mass not exceeding 18 kg, and for material and components located inside fire enclosures (see 4.7.3.2 and 4.7.3.4)		N/A
A.2.1	Samples, material.....:		—
	Wall thickness (mm).....:		—
A.2.2	Conditioning of samples; temperature (°C)		N/A
A.2.3	Mounting of samples		N/A
A.2.4	Test flame (see IEC 60695-11-4)		N/A
	Flame A, B or C		—
A.2.5	Test procedure		N/A
A.2.6	Compliance criteria		N/A
	Sample 1 burning time (s).....:		—
	Sample 2 burning time (s).....:		—
	Sample 3 burning time (s).....:		—
A.2.7	Alternative test acc. to IEC 60695-11-5, cl. 5 and 9		N/A
	Sample 1 burning time (s).....:		—
	Sample 2 burning time (s).....:		—
	Sample 3 burning time (s).....:		—
A.3	Hot flaming oil test (see 4.6.2)		N/A
A.3.1	Mounting of samples		N/A
A.3.2	Test procedure		N/A
A.3.3	Compliance criterion		N/A

B	ANNEX B, MOTOR TESTS UNDER ABNORMAL CONDITIONS (see 4.7.2.2 and 5.3.2) <i>No motor used.</i>		N/A
B.1	General requirements		N/A
	Position		—
	Manufacturer		—
	Type		—
	Rated values		—



EN 60950-1			
Clause	Requirement	Remark	Result

B.2	Test conditions		N/A
B.3	Maximum temperatures		N/A
B.4	Running overload test		N/A
B.5	Locked-rotor overload test		N/A
	Test duration (days)		—
	Electric strength test: test voltage (V)		—
B.6	Running overload test for d.c. motors in secondary circuits		N/A
B.6.1	General		N/A
B.6.2	Test procedure		N/A
B.6.3	Alternative test procedure		N/A
B.6.4	Electric strength test; test voltage (V)		N/A
B.7	Locked-rotor overload test for d.c. motors in secondary circuits		N/A
B.7.1	General		N/A
B.7.2	Test procedure		N/A
B.7.3	Alternative test procedure		N/A
B.7.4	Electric strength test; test voltage (V)		N/A
B.8	Test for motors with capacitors		N/A
B.9	Test for three-phase motors		N/A
B.10	Test for series motors		N/A
	Operating voltage (V)		—

C	ANNEX C, TRANSFORMERS (see 1.5.4 and 5.3.3)		P
	Position		—
	Manufacturer	(see appended table 1.5.1)	—
	Type	(see appended table 1.5.1)	—
	Rated values	(see appended table 1.5.1)	—
	Method of protection.....	By protection circuit	—
C.1	Overload test	(see appended table 5.3)	P
C.2	Insulation	(see appended tables 5.2 and C.2)	P
	Protection from displacement of windings.....	By bobbin and insulation tape	P

D	ANNEX D, MEASURING INSTRUMENTS FOR TOUCH-CURRENT TESTS (see 5.1.4)		P
D.1	Measuring instrument	Figure D.1 used	P
D.2	Alternative measuring instrument		N/A

E	ANNEX E, TEMPERATURE RISE OF A WINDING (see 1.4.13)		N/A
----------	--	--	-----



EN 60950-1			
Clause	Requirement	Remark	Result

F	ANNEX F, MEASUREMENT OF CLEARANCES AND CREEPAGE DISTANCES (see 2.10 and Annex G)	P
----------	---	---

G	ANNEX G, ALTERNATIVE METHOD FOR DETERMINING MINIMUM CLEARANCES	N/A
G.1	Clearances	N/A
G.1.1	General	N/A
G.1.2	Summary of the procedure for determining minimum clearances	N/A
G.2	Determination of mains transient voltage (V)	N/A
G.2.1	AC mains supply	N/A
G.2.2	Earthed d.c. mains supplies	N/A
G.2.3	Unearthed d.c. mains supplies	N/A
G.2.4	Battery operation	N/A
G.3	Determination of telecommunication network transient voltage (V)	N/A
G.4	Determination of required withstand voltage (V)	N/A
G.4.1	Mains transients and internal repetitive peaks	N/A
G.4.2	Transients from telecommunication networks	N/A
G.4.3	Combination of transients	N/A
G.4.4	Transients from cable distribution systems	N/A
G.5	Measurement of transient voltages (V)	N/A
	a) Transients from a mains supply	N/A
	For an a.c. mains supply	N/A
	For a d.c. mains supply	N/A
	b) Transients from a telecommunication network	N/A
G.6	Determination of minimum clearances	N/A

H	ANNEX H, IONIZING RADIATION (see 4.3.13)	N/A
----------	---	-----

J	ANNEX J, TABLE OF ELECTROCHEMICAL POTENTIALS (see 2.6.5.6)	N/A
	Metal(s) used	—

K	ANNEX K, THERMAL CONTROLS (see 1.5.3 and 5.3.8)	N/A
K.1	Making and breaking capacity	N/A
K.2	Thermostat reliability; operating voltage (V)	N/A
K.3	Thermostat endurance test; operating voltage (V)	N/A
K.4	Temperature limiter endurance; operating voltage (V)	N/A
K.5	Thermal cut-out reliability	N/A
K.6	Stability of operation	N/A

EN 60950-1			
Clause	Requirement	Remark	Result

L	ANNEX L, NORMAL LOAD CONDITIONS FOR SOME TYPES OF ELECTRICAL BUSINESS EQUIPMENT (see 1.2.2.1 and 4.5.2)		P
L.1	Typewriters		N/A
L.2	Adding machines and cash registers		N/A
L.3	Erasers		N/A
L.4	Pencil sharpeners		N/A
L.5	Duplicators and copy machines		N/A
L.6	Motor-operated files		N/A
L.7	Other business equipment	See appended table 1.6.2	P

M	ANNEX M, CRITERIA FOR TELEPHONE RINGING SIGNALS (see 2.3.1)		N/A
M.1	Introduction		N/A
M.2	Method A		N/A
M.3	Method B		N/A
M.3.1	Ringling signal		N/A
M.3.1.1	Frequency (Hz)		—
M.3.1.2	Voltage (V)		—
M.3.1.3	Cadence; time (s), voltage (V)		—
M.3.1.4	Single fault current (mA)		—
M.3.2	Tripping device and monitoring voltage		N/A
M.3.2.1	Conditions for use of a tripping device or a monitoring voltage		N/A
M.3.2.2	Tripping device		N/A
M.3.2.3	Monitoring voltage (V)		N/A

N	ANNEX N, IMPULSE TEST GENERATORS (see 1.5.7.2, 1.5.7.3, 2.10.3.9, 6.2.2.1, 7.3.2, 7.4.3 and Clause G.5)		N/A
N.1	ITU-T impulse test generators		N/A
N.2	IEC 60065 impulse test generator		N/A

P	ANNEX P, NORMATIVE REFERENCES		—
----------	--------------------------------------	--	----------

Q	ANNEX Q, Voltage dependent resistors (VDRs) (see 1.5.9.1)		N/A
	a) Preferred climatic categories		N/A
	b) Maximum continuous voltage		N/A
	c) Pulse current		N/A
R	ANNEX R, EXAMPLES OF REQUIREMENTS FOR QUALITY CONTROL PROGRAMMES		N/A
R.1	Minimum separation distances for unpopulated coated printed boards (see 2.10.6.2)		N/A
R.2	Reduced clearances (see 2.10.3)		N/A

EN 60950-1			
Clause	Requirement	Remark	Result
S	ANNEX S, PROCEDURE FOR IMPULSE TESTING (see 6.2.2.3)		N/A
S.1	Test equipment		N/A
S.2	Test procedure		N/A
S.3	Examples of waveforms during impulse testing		N/A
T	ANNEX T, GUIDANCE ON PROTECTION AGAINST INGRESS OF WATER (see 1.1.2)		N/A
		See separate test report	—
U	ANNEX U, INSULATED WINDING WIRES FOR USE WITHOUT INTERLEAVED INSULATION (see 2.10.5.4)		P
		See separate test report	—
V	ANNEX V, AC POWER DISTRIBUTION SYSTEMS (see 1.6.1)		P
V.1	Introduction	See below.	P
V.2	TN power distribution systems	TN power considered.	P
W	ANNEX W, SUMMATION OF TOUCH CURRENTS		N/A
W.1	Touch current from electronic circuits		N/A
W.1.1	Floating circuits		N/A
W.1.2	Earthed circuits		N/A
W.2	Interconnection of several equipments		N/A
W.2.1	Isolation		N/A
W.2.2	Common return, isolated from earth		N/A
W.2.3	Common return, connected to protective earth		N/A
X	ANNEX X, MAXIMUM HEATING EFFECT IN TRANSFORMER TESTS (see clause C.1)		P
X.1	Determination of maximum input current		P
X.2	Overload test procedure		P
Y	ANNEX Y, ULTRAVIOLET LIGHT CONDITIONING TEST (see 4.3.13.3)		N/A
Y.1	Test apparatus	:	N/A
Y.2	Mounting of test samples	:	N/A
Y.3	Carbon-arc light-exposure apparatus	:	N/A
Y.4	Xenon-arc light exposure apparatus	:	N/A
Z	ANNEX Z, OVERVOLTAGE CATEGORIES (see 2.10.3.2 and Clause G.2)		P
AA	ANNEX AA, MANDREL TEST (see 2.10.5.8)		N/A



EN 60950-1			
Clause	Requirement	Remark	Result

BB	ANNEX BB, CHANGES IN THE SECOND EDITION	—	
-----------	--	---	--

CC	ANNEX CC, Evaluation of integrated circuit (IC) current limiters	N/A	
CC.1	General		N/A
CC.2	Test program 1.....:		N/A
CC.3	Test program 2.....:		N/A

DD	ANNEX DD, Requirements for the mounting means of rack-mounted equipment	N/A	
DD.1	General		N/A
DD.2	Mechanical strength test, variable N.....:		N/A
DD.3	Mechanical strength test, 250N, including end stops.....:		N/A
DD.4	Compliance.....:		N/A

EE	ANNEX EE, Household and home/office document/media shredders	N/A	
EE.1	General		N/A
EE.2	Markings and instructions		N/A
	Use of markings or symbols.....:		N/A
	Information of user instructions, maintenance and/or servicing instructions.....:		N/A
EE.3	Inadvertent reactivation test.....:		N/A
EE.4	Disconnection of power to hazardous moving parts:		N/A
	Use of markings or symbols.....:		N/A
EE.5	Protection against hazardous moving parts		N/A
	Test with test finger (Figure 2A)		N/A
	Test with wedge probe (Figure EE1 and EE2)		N/A

EN 60950-1			
Clause	Requirement	Remark	Result

IEC 60950-1, GROUP DIFFERENCES (CENELEC common modifications EN)			
Clause	Requirement + Test	Result - Remark	Verdict
1.3.Z1	<p>Add the following subclause:</p> <p>1.3.Z1 Exposure to excessive sound pressure The apparatus shall be so designed and constructed as to present no danger when used for its intended purpose, either in normal operating conditions or under fault conditions, particularly providing protection against exposure to excessive sound pressures from headphones or earphones.</p> <p>NOTE Z1 A new method of measurement is described in EN 50332-1, Sound system equipment: Headphones and earphones associated with portable audio equipment - Maximum sound pressure level measurement methodology and limit considerations - Part 1: General method for "one package equipment", and in EN 50332-2, Sound system equipment: Headphones and earphones associated with portable audio equipment - Maximum sound pressure level measurement methodology and limit considerations - Part 2: Guidelines to associate sets with headphones coming from different manufacturers.</p>		N/A
(A12:2011)	<p>In EN 60950-1:2006/A12:2011 Delete the addition of 1.3.Z1 / EN 60950-1:2006 Delete the definition 1.2.3.Z1 / EN 60950-1:2006 /A1:2010</p>		--
1.5.1 (Added info*)	<p>Add the following NOTE:</p> <p>NOTE Z1 The use of certain substances in electrical and electronic equipment is restricted within the EU: see Directive 2002/95/EC. New Directive 2011/65/11 *</p>		--
1.7.2.1 (A1:2010)	<p>In addition, for a PORTABLE SOUND SYSTEM, the instructions shall include a warning that excessive sound pressure from earphones and headphones can cause hearing loss.</p>		N/A
1.7.2.1 (A12.2011)	<p>In EN 60950-1:2006/A12:2011 Delete NOTE Z1 and the addition for Portable Sound System. Add the following clause and annex to the existing standard and amendments.</p>		N/A
	Zx Protection against excessive sound pressure from personal music players		N/A

EN 60950-1			
Clause	Requirement	Remark	Result

IEC 60950-1, GROUP DIFFERENCES (CENELEC common modifications EN)			
Clause	Requirement + Test	Result - Remark	Verdict
	<p>Zx.1 General This sub-clause specifies requirements for protection against excessive sound pressure from personal music players that are closely coupled to the ear. It also specifies requirements for earphones and headphones intended for use with personal music players.</p> <p>A personal music player is a portable equipment for personal use, that:</p> <ul style="list-style-type: none"> – is designed to allow the user to listen to recorded or broadcast sound or video; and – primarily uses headphones or earphones that can be worn in or on or around the ears; and – allows the user to walk around while in use. <p>NOTE 1 Examples are hand-held or body-worn portable CD players, MP3 audio players, mobile phones with MP3 type features, PDA's or similar equipment.</p> <p>A personal music player and earphones or headphones intended to be used with personal music players shall comply with the requirements of this sub-clause.</p> <p>The requirements in this sub-clause are valid for music or video mode only.</p> <p>The requirements do not apply:</p> <ul style="list-style-type: none"> – while the personal music player is connected to an external amplifier; or – while the headphones or earphones are not used. <p>NOTE 2 An external amplifier is an amplifier which is not part of the personal music player or the listening device, but which is intended to play the music as a standalone music player.</p> <p>The requirements do not apply to:</p> <ul style="list-style-type: none"> – hearing aid equipment and professional equipment; <p>NOTE 3 Professional equipment is equipment sold through special sales channels. All products sold through normal electronics stores are considered not to be professional equipment.</p>		N/A
	<ul style="list-style-type: none"> – analogue personal music players (personal music players without any kind of digital processing of the sound signal) that are brought to the market before the end of 2015. <p>NOTE 4 This exemption has been allowed because this technology is falling out of use and it is expected that within a few years it will no longer exist. This exemption will not be extended to other technologies.</p> <p>For equipment which is clearly designed or intended for use by young children, the limits of EN 71-1 apply.</p>		N/A




EN 60950-1			
Clause	Requirement	Remark	Result

IEC 60950-1, GROUP DIFFERENCES (CENELEC common modifications EN)			
Clause	Requirement + Test	Result - Remark	Verdict
	<p>Zx.2 Equipment requirements</p> <p>No safety provision is required for equipment that complies with the following:</p> <ul style="list-style-type: none">– equipment provided as a package (personal music player with its listening device), where the acoustic output $L_{Aeq,T}$ is ≤ 85 dBA measured while playing the fixed “programme simulation noise” as described in EN 50332-1; and– a personal music player provided with an analogue electrical output socket for a listening device, where the electrical output is ≤ 27 mV measured as described in EN 50332-2, while playing the fixed “programme simulation noise” as described in EN 50332-1. <p>NOTE 1 Wherever the term acoustic output is used in this clause, the 30 s A-weighted equivalent sound pressure level $L_{Aeq,T}$ is meant. See also Zx.5 and Annex Zx.</p> <p>All other equipment shall:</p> <ul style="list-style-type: none">a) protect the user from unintentional acoustic outputs exceeding those mentioned above; andb) have a standard acoustic output level not exceeding those mentioned above, and automatically return to an output level not exceeding those mentioned above when the power is switched off; and		N/A

EN 60950-1			
Clause	Requirement	Remark	Result

	<p>c) provide a means to actively inform the user of the increased sound pressure when the equipment is operated with an acoustic output exceeding those mentioned above. Any means used shall be acknowledged by the user before activating a mode of operation which allows for an acoustic output exceeding those mentioned above. The acknowledgement does not need to be repeated more than once every 20 h of cumulative listening time; and</p> <p>NOTE 2 Examples of means include visual or audible signals. Action from the user is always required.</p> <p>NOTE 3 The 20 h listening time is the accumulative listening time, independent how often and how long the personal music player has been switched off.</p> <p>d) have a warning as specified in Zx.3; and</p> <p>e) not exceed the following:</p> <ol style="list-style-type: none"> 1) equipment provided as a package (player with its listening device), the acoustic output shall be ≤ 100 dBA measured while playing the fixed "programme simulation noise" described in EN 50332-1; and 2) a personal music player provided with an analogue electrical output socket for a listening device, the electrical output shall be ≤ 150 mV measured as described in EN 50332-2, while playing the fixed "programme simulation noise" described in EN 50332-1. <p>For music where the average sound pressure (long term $L_{Aeq,T}$) measured over the duration of the song is lower than the average produced by the programme simulation noise, the warning does not need to be given as long as the average sound pressure of the song is below the basic limit of 85 dBA. In this case T becomes the duration of the song.</p> <p>NOTE 4 Classical music typically has an average sound pressure (long term $L_{Aeq,T}$) which is much lower than the average programme simulation noise. Therefore, if the player is capable to analyse the song and compare it with the programme simulation noise, the warning does not need to be given as long as the average sound pressure of the song is below the basic limit of 85 dBA.</p> <p>For example, if the player is set with the programme simulation noise to 85 dBA, but the average music level of the song is only 65 dBA, there is no need to give a warning or ask an acknowledgement as long as the average sound level of the song is not above the basic limit of 85 dBA.</p>		N/A
	<p>Zx.3 Warning</p> <p>The warning shall be placed on the equipment, or on the packaging, or in the instruction manual and shall consist of the following:</p> <ul style="list-style-type: none"> – the symbol of Figure 1 with a minimum height of 5 mm; and – the following wording, or similar: <p>"To prevent possible hearing damage, do not listen at high volume levels for long periods."</p>		N/A

EN 60950-1			
Clause	Requirement	Remark	Result
	 <p>Figure 1 – Warning label (IEC 60417-6044)</p> <p>Alternatively, the entire warning may be given through the equipment display during use, when the user is asked to acknowledge activation of the higher level.</p>		
	Zx.4 Requirements for listening devices (headphones and earphones)		N/A
	<p>Zx.4.1 Wired listening devices with analogue input</p> <p>With 94 dBA sound pressure output $L_{Aeq,T}$, the input voltage of the fixed “programme simulation noise” described in EN 50332-2 shall be ≥ 75 mV.</p> <p>This requirement is applicable in any mode where the headphones can operate (active or passive), including any available setting (for example built-in volume level control).</p> <p>NOTE The values of 94 dBA – 75 mV correspond with 85dBA – 27 mV and 100 dBA – 150 mV.</p>		N/A
	<p>Zx.4.2 Wired listening devices with digital input</p> <p>With any playing device playing the fixed “programme simulation noise” described in EN 50332-1 (and respecting the digital interface standards, where a digital interface standard exists that specifies the equivalent acoustic level), the acoustic output $L_{Aeq,T}$ of the listening device shall be ≤ 100 dBA.</p> <p>This requirement is applicable in any mode where the headphones can operate, including any available setting (for example built-in volume level control, additional sound feature like equalization, etc.).</p> <p>NOTE An example of a wired listening device with digital input is a USB headphone.</p>		N/A

EN 60950-1			
Clause	Requirement	Remark	Result
	<p>Zx.4.3 Wireless listening devices In wireless mode: – with any playing and transmitting device playing the fixed programme simulation noise described in EN 50332-1; and – respecting the wireless transmission standards, where an air interface standard exists that specifies the equivalent acoustic level; and – with volume and sound settings in the listening device (for example built-in volume level control, additional sound feature like equalization, etc.) set to the combination of positions that maximize the measured acoustic output for the abovementioned programme simulation noise, the acoustic output $L_{Aeq,T}$ of the listening device shall be ≤ 100 dBA.</p> <p>NOTE An example of a wireless listening device is a Bluetooth headphone.</p>		N/A
	<p>Zx.5 Measurement methods Measurements shall be made in accordance with EN 50332-1 or EN 50332-2 as applicable. Unless stated otherwise, the time interval T shall be 30 s.</p> <p>NOTE Test method for wireless equipment provided without listening device should be defined.</p>		N/A
2.7.1	<p>Replace the subclause as follows: Basic requirements To protect against excessive current, short-circuits and earth faults in PRIMARY CIRCUITS, protective devices shall be included either as integral parts of the equipment or as parts of the building installation, subject to the following, a), b) and c): a) except as detailed in b) and c), protective devices necessary to comply with the requirements of 5.3 shall be included as parts of the equipment; b) for components in series with the mains input to the equipment such as the supply cord, appliance coupler, r.f.i. filter and switch, short-circuit and earth fault protection may be provided by protective devices in the building installation;</p>	The equipment is provided with fuse complies with a).	P
	<p>c) it is permitted for PLUGGABLE EQUIPMENT TYPE B or PERMANENTLY CONNECTED EQUIPMENT, to rely on dedicated overcurrent and short-circuit protection in the building installation, provided that the means of protection, e.g. fuses or circuit breakers, is fully specified in the installation instructions. If reliance is placed on protection in the building installation, the installation instructions shall so state, except that for PLUGGABLE EQUIPMENT TYPE A the building installation shall be regarded as providing protection in accordance with the rating of the wall socket outlet.</p>		N/A

EN 60950-1									
Clause	Requirement	Remark	Result						
2.7.2	This subclause has been declared 'void'.		--						
3.2.3	Delete the NOTE in Table 3A, and delete also in this table the conduit sizes in parentheses.		N/A						
3.2.5.1	<p>Replace "60245 IEC 53" by "H05 RR-F"; "60227 IEC 52" by "H03 VV-F or H03 VVH2-F"; "60227 IEC 53" by "H05 VV-F or H05 VVH2-F2".</p> <p>In Table 3B, replace the first four lines by the following:</p> <table style="margin-left: 40px; border-collapse: collapse;"> <tr> <td style="padding-right: 10px;">Up to and including 6 </td> <td style="padding-right: 10px;">0,75 a) </td> </tr> <tr> <td style="padding-right: 10px;">Over 6 up to and including 10 </td> <td style="padding-right: 10px;">(0,75) b) 1,0 </td> </tr> <tr> <td style="padding-right: 10px;">Over 10 up to and including 16 </td> <td style="padding-right: 10px;">(1,0) c) 1,5 </td> </tr> </table> <p>In the conditions applicable to Table 3B delete the words "in some countries" in condition a). In NOTE 1, applicable to Table 3B, delete the second sentence.</p>	Up to and including 6	0,75 a)	Over 6 up to and including 10	(0,75) b) 1,0	Over 10 up to and including 16	(1,0) c) 1,5	Power supply cord has not been check, refer to Summary of Testing.	N/A
Up to and including 6	0,75 a)								
Over 6 up to and including 10	(0,75) b) 1,0								
Over 10 up to and including 16	(1,0) c) 1,5								
3.2.5.1 (A2:2013)	NOTE Z1 The harmonised code designations corresponding to the IEC cord types are given in Annex ZD	Power supply cord has not been check, refer to Summary of Testing.	N/A						
3.3.4	<p>In Table 3D, delete the fourth line: conductor sizes for 10 to 13 A, and replace with the following:</p> <table style="margin-left: 40px; border-collapse: collapse;"> <tr> <td style="padding-right: 10px;">Over 10 up to and including 16 </td> <td style="padding-right: 10px;">1,5 to 2,5 </td> <td style="padding-right: 10px;">1,5 to 4 </td> </tr> </table> <p>Delete the fifth line: conductor sizes for 13 to 16 A</p>	Over 10 up to and including 16	1,5 to 2,5	1,5 to 4	Power supply cord has not been check, refer to Summary of Testing.	N/A			
Over 10 up to and including 16	1,5 to 2,5	1,5 to 4							
4.3.13.6 (A1:2010)	<p>Replace the existing NOTE by the following:</p> <p>NOTE Z1 Attention is drawn to: 1999/519/EC: Council Recommendation on the limitation of exposure of the general public to electromagnetic fields 0 Hz to 300 GHz, and 2006/25/EC: Directive on the minimum health and safety requirements regarding the exposure of workers to risks arising from physical agents (artificial optical radiation).</p>		N/A						
	Standards taking into account mentioned Recommendation and Directive which demonstrate compliance with the applicable EU Directive are indicated in the OJEC.		N/A						
Annex H	<p>Replace the last paragraph of this annex by:</p> <p>At any point 10 cm from the surface of the OPERATOR ACCESS AREA, the dose rate shall not exceed 1 µSv/h (0,1 mR/h) (see NOTE). Account is taken of the background level.</p> <p>Replace the notes as follows: NOTE These values appear in Directive 96/29/Euratom. Delete NOTE 2.</p>	The unit does not emit X-ray radiation.	N/A						
Bibliography	Additional EN standards.		—						

EN 60950-1			
Clause	Requirement	Remark	Result

ZA	NORMATIVE REFERENCES TO INTERNATIONAL PUBLICATIONS WITH THEIR CORRESPONDING EUROPEAN PUBLICATIONS		—
-----------	--	--	---

ZB ANNEX (normative) SPECIAL NATIONAL CONDITIONS (EN)			
Clause	Requirement + Test	Result - Remark	Verdict
1.2.4.1	In Denmark , certain types of Class I appliances (see 3.2.1.1) may be provided with a plug not establishing earthing conditions when inserted into Danish socket-outlets.		N/A
1.2.13.14 (A11:2009)	In Norway and Sweden , for requirements see 1.7.2.1 and 7.3 of this annex.		N/A
1.5.7.1 (A11:2009)	In Finland, Norway and Sweden , resistors bridging BASIC INSULATION in CLASS I PLUGGABLE EQUIPMENT TYPE A must comply with the requirements in 1.5.7.1. In addition when a single resistor is used, the resistor must withstand the resistor test in 1.5.7.2.	Should be considered when market into these countries	N/A
1.5.8	In Norway , due to the IT power system used (see annex V, Figure V.7), capacitors are required to be rated for the applicable line-to-line voltage (230 V).	Should be considered when market into these countries	N/A
1.5.9.4	In Finland, Norway and Sweden , the third dashed sentence is applicable only to equipment as defined in 6.1.2.2 of this annex.	Should be considered when market into these countries	N/A

EN 60950-1			
Clause	Requirement	Remark	Result
1.7.2.1	<p>In Finland, Norway and Sweden, CLASS I PLUGGABLE EQUIPMENT TYPE A intended for connection to other equipment or a network shall, if safety relies on connection to protective earth or if surge suppressors are connected between the network terminals and accessible parts, have a marking stating that the equipment must be connected to an earthed mains socket-outlet. The marking text in the applicable countries shall be as follows:</p> <p>In Finland: "Laite on liitettävä suojakoskettimilla varustettuun pistorasiaan"</p> <p>In Norway: "Apparatet må tilkoples jordet stikkontakt"</p> <p>In Sweden: "Apparaten skall anslutas till jordat uttag"</p>	Should be considered when market into these countries	N/A
1.7.2.1 (A11:2009)	<p>In Norway and Sweden, the screen of the cable distribution system is normally not earthed at the entrance of the building and there is normally no equipotential bonding system within the building. Therefore the protective earthing of the building installation need to be isolated from the screen of a cable distribution system.</p> <p>It is however accepted to provide the insulation external to the equipment by an adapter or an interconnection cable with galvanic isolator, which may be provided by e.g. a retailer.</p> <p>The user manual shall then have the following or similar information in Norwegian and Swedish language respectively, depending on in what country the equipment is intended to be used in:</p> <p>"Equipment connected to the protective earthing of the building installation through the mains connection or through other equipment with a connection to protective earthing – and to a cable distribution system using coaxial cable, may in some circumstances create a fire hazard. Connection to a cable distribution system has therefore to be provided through a device providing electrical isolation below a certain frequency range (galvanic isolator, see EN 60728-11)."</p>		

EN 60950-1			
Clause	Requirement	Remark	Result
	<p>NOTE In Norway, due to regulation for installations of cable distribution systems, and in Sweden, a galvanic isolator shall provide electrical insulation below 5 MHz. The insulation shall withstand a dielectric strength of 1,5 kV r.m.s., 50 Hz or 60 Hz, for 1 min.</p> <p>Translation to Norwegian (the Swedish text will also be accepted in Norway):</p> <p>“Utstyr som er koplet til beskyttelsesjord via nettplugg og/eller via annet jordtilkoplest utstyr – og er tilkoplest et kabel-TV nett, kan forårsake brannfare. For å unngå dette skal det ved tilkopling av utstyret til kabel-TV nettet installeres en galvanisk isolator mellom utstyret og kabel- TV nettet.”</p> <p>Translation to Swedish:</p> <p>”Utrustning som är kopplad till skyddsjord via jordat vägguttag och/eller via annan utrustning och samtidigt är kopplad till kabel-TV nät kan i vissa fall medföra risk för brand. För att undvika detta skall vid anslutning av utrustningen till kabel-TV nät galvanisk isolator finnas mellan utrustningen och kabel-TV nätet.”</p>	Should be considered when market into these countries	N/A
1.7.2.1 (A2:2013)	<p>In Denmark, CLASS I PLUGGABLE EQUIPMENT TYPE A intended for connection to other equipment or a network shall, if safety relies on connection to protective earth or if surge suppressors are connected between the network terminals and accessible parts, have a marking stating that the equipment must be connected to an earthed mains socket-outlet.</p> <p>The marking text in Denmark shall be as follows: In Denmark: “Apparatets stikprop skal tilsluttes en stikkontakt med jord, som giver forbindelse til stikproppens jord.”</p>	Should be considered when market into these countries	N/A
1.7.5 1.7.5 (A11:2009)	<p>In Denmark, socket-outlets for providing power to other equipment shall be in accordance with the Heavy Current Regulations, Section 107-2-D1, Standard Sheet DK 1-3a, DK 1-5a or DK 1-7a, when used on Class I equipment. For STATIONARY EQUIPMENT the socket-outlet shall be in accordance with Standard Sheet DK 1-1b or DK 1-5a.</p> <p>For CLASS II EQUIPMENT the socket outlet shall be in accordance with Standard Sheet DKA 1-4a.</p>		N/A

EN 60950-1			
Clause	Requirement	Remark	Result
1.7.5 (A2:2013)	<p>In Denmark, socket-outlets for providing power to other equipment shall be in accordance with the DS 60884-2-D1:2011.</p> <p>For class I equipment the following Standard Sheets are applicable: DK 1-3a, DK 1-1c, DK 1-1d, DK 1-5a or DK 1-7a, with the exception for STATIONARY EQUIPMENT where the socket-outlets shall be in accordance with Standard Sheet DK 1-1b, DK 1-1c, DK 1-1d or DK 1-5a.</p> <p>Socket outlets intended for providing power to Class II apparatus with a rated current of 2,5 A shall be in accordance with DS 60884-2-D1 standard sheet DKA 1-4a. Other current rating socket outlets shall be in compliance with by DS 60884-2-D1 Standard Sheet DKA 1-3a or DKA 1-3b.</p> <p>Justification the Heavy Current Regulations, 6c</p>		N/A
2.2.4	In Norway , for requirements see 1.7.2.1, 6.1.2.1 and 6.1.2.2 of this annex.		N/A
2.3.2	In Finland, Norway and Sweden there are additional requirements for the insulation. See 6.1.2.1 and 6.1.2.2 of this annex.		N/A
2.3.4	In Norway , for requirements see 1.7.2.1, 6.1.2.1 and 6.1.2.2 of this annex.		N/A
2.6.3.3	In the United Kingdom , the current rating of the circuit shall be taken as 13 A, not 16 A.		N/A
2.7.1	In the United Kingdom , to protect against excessive currents and short-circuits in the PRIMARY CIRCUIT of DIRECT PLUG-IN EQUIPMENT, tests according to 5.3 shall be conducted, using an external protective device rated 30 A or 32 A. If these tests fail, suitable protective devices shall be included as integral parts of the DIRECT PLUG-IN EQUIPMENT, so that the requirements of 5.3 are met.		N/A
2.10.5.13	In Finland, Norway and Sweden , there are additional requirements for the insulation, see 6.1.2.1 and 6.1.2.2 of this annex.		N/A
3.2.1.1	<p>In Switzerland, supply cords of equipment having a RATED CURRENT not exceeding 10 A shall be provided with a plug complying with SEV 1011 or IEC 60884-1 and one of the following dimension sheets:</p> <p>SEV 6532-2.1991 Plug Type 15 3P+N+PE 250/400 V, 10 A</p>		N/A



EN 60950-1			
Clause	Requirement	Remark	Result
	<p>SEV 6533-2.1991 Plug Type 11 L+N 250 V, 10 A</p> <p>SEV 6534-2.1991 Plug Type 12 L+N+PE 250 V, 10 A</p> <p>In general, EN 60309 applies for plugs for currents exceeding 10 A. However, a 16 A plug and socket-outlet system is being introduced in Switzerland, the plugs of which are according to the following dimension sheets, published in February 1998:</p> <p>SEV 5932-2.1998: Plug Type 25 , 3L+N+PE 230/400 V, 16 A</p> <p>SEV 5933-2.1998: Plug Type 21, L+N, 250 V, 10A</p> <p>SEV 5934-2.1998: Plug Type 23, L+N+PE 250 V, 16 A</p>		N/A
3.2.1.1	<p>In Denmark, supply cords of single-phase equipment having a rated current not exceeding 13 A shall be provided with a plug according to the Heavy Current Regulations, Section 107-2-D1.</p> <p>CLASS I EQUIPMENT provided with socket-outlets with earth contacts or which are intended to be used in locations where protection against indirect contact is required according to the wiring rules shall be provided with a plug in accordance with standard sheet DK 2-1a or DK 2-5a.</p> <p>If poly-phase equipment and single-phase equipment having a RATED CURRENT exceeding 13 A is provided with a supply cord with a plug, this plug shall be in accordance with the Heavy Current Regulations, Section 107-2-D1 or EN 60309-2.</p>		N/A
3.2.1.1 (A2:2013)	<p>In Denmark, supply cords of single-phase equipment having a rated current not exceeding 13 A shall be provided with a plug according to DS 60884-2-D1.</p> <p>CLASS I EQUIPMENT provided with socket-outlets with earth contacts or which are intended to be used in locations where protection against indirect contact is required according to the wiring rules shall be provided with a plug in accordance with standard sheet DK 2-1a or DK 2-5a.</p> <p>If a single-phase equipment having a RATED CURRENT exceeding 13 A or if a poly-phase equipment is provided with a supply cord with a plug, this plug shall be in accordance with the standard sheets DK 6-1a in DS 60884-2-D1 or EN 60309-2.</p> <p>Justification the Heavy Current Regulations, 6c</p>		N/A

EN 60950-1			
Clause	Requirement	Remark	Result
3.2.1.1	<p>In Spain, supply cords of single-phase equipment having a rated current not exceeding 10 A shall be provided with a plug according to UNE 20315:1994.</p> <p>Supply cords of single-phase equipment having a rated current not exceeding 2,5 A shall be provided with a plug according to UNE-EN 50075:1993.</p> <p>CLASS I EQUIPMENT provided with socket-outlets with earth contacts or which are intended to be used in locations where protection against indirect contact is required according to the wiring rules, shall be provided with a plug in accordance with standard UNE 20315:1994.</p> <p>If poly-phase equipment is provided with a supply cord with a plug, this plug shall be in accordance with UNE-EN 60309-2.</p>		N/A
3.2.1.1	<p>In the United Kingdom, apparatus which is fitted with a flexible cable or cord and is designed to be connected to a mains socket conforming to BS 1363 by means of that flexible cable or cord and plug, shall be fitted with a 'standard plug' in accordance with Statutory Instrument 1768:1994 - The Plugs and Sockets etc. (Safety) Regulations 1994, unless exempted by those regulations.</p> <p>NOTE 'Standard plug' is defined in SI 1768:1994 and essentially means an approved plug conforming to BS 1363 or an approved conversion plug.</p>		N/A
3.2.1.1	<p>In Ireland, apparatus which is fitted with a flexible cable or cord and is designed to be connected to a mains socket conforming to I.S. 411 by means of that flexible cable or cord and plug, shall be fitted with a 13 A plug in accordance with Statutory Instrument 525:1997 - National Standards Authority of Ireland (section 28) (13 A Plugs and Conversion Adaptors for Domestic Use) Regulations 1997.</p>		N/A
3.2.4	<p>In Switzerland, for requirements see 3.2.1.1 of this annex.</p>		N/A
3.2.5.1	<p>In the United Kingdom, a power supply cord with conductor of 1,25 mm² is allowed for equipment with a rated current over 10 A and up to and including 13 A.</p>		N/A
3.3.4	<p>In the United Kingdom, the range of conductor sizes of flexible cords to be accepted by terminals for equipment with a RATED CURRENT of over 10 A up to and including 13 A is:</p> <ul style="list-style-type: none"> • 1,25 mm² to 1,5 mm² nominal cross-sectional area. 		N/A

EN 60950-1			
Clause	Requirement	Remark	Result
4.3.6	In the United Kingdom , the torque test is performed using a socket outlet complying with BS 1363 part 1:1995, including Amendment 1:1997 and Amendment 2:2003 and the plug part of DIRECT PLUG-IN EQUIPMENT shall be assessed to BS 1363: Part 1, 12.1, 12.2, 12.3, 12.9, 12.11, 12.12, 12.13, 12.16 and 12.17, except that the test of 12.17 is performed at not less than 125 °C. Where the metal earth pin is replaced by an Insulated Shutter Opening Device (ISOD), the requirements of clauses 22.2 and 23 also apply.		N/A
4.3.6	In Ireland , DIRECT PLUG-IN EQUIPMENT is known as plug similar devices. Such devices shall comply with Statutory Instrument 526:1997 - National Standards Authority of Ireland (Section 28) (Electrical plugs, plug similar devices and sockets for domestic use) Regulations, 1997.		N/A
5.1.7.1	In Finland, Norway and Sweden TOUCH CURRENT measurement results exceeding 3,5 mA r.m.s. are permitted only for the following equipment: <ul style="list-style-type: none"> • STATIONARY PLUGGABLE EQUIPMENT TYPE A that <ul style="list-style-type: none"> is intended to be used in a RESTRICTED ACCESS LOCATION where equipotential bonding has been applied, for example, in a telecommunication centre; and has provision for a permanently connected PROTECTIVE EARTHING CONDUCTOR; and is provided with instructions for the installation of that conductor by a SERVICE PERSON; • STATIONARY PLUGGABLE EQUIPMENT TYPE B; • STATIONARY PERMANENTLY CONNECTED EQUIPMENT. 		N/A

EN 60950-1			
Clause	Requirement	Remark	Result
6.1.2.1 (A1:2010)	<p>In Finland, Norway and Sweden, add the following text between the first and second paragraph of the compliance clause:</p> <p>If this insulation is solid, including insulation forming part of a component, it shall at least consist of either</p> <ul style="list-style-type: none"> - two layers of thin sheet material, each of which shall pass the electric strength test below, or - one layer having a distance through insulation of at least 0,4 mm, which shall pass the electric strength test below. <p>Alternatively for components, there is no distance through insulation requirements for the insulation consisting of an insulating compound completely filling the casing, so that CLEARANCES and CREEPAGE DISTANCES do not exist, if the component passes the electric strength test in accordance with the compliance clause below and in addition</p> <ul style="list-style-type: none"> - passes the tests and inspection criteria of 2.10.11 with an electric strength test of 1,5 kV multiplied by 1,6 (the electric strength test of 2.10.10 shall be performed using 1,5 kV), and - is subject to ROUTINE TESTING for electric strength during manufacturing, using a test voltage of 1,5 kV. 		N/A

EN 60950-1			
Clause	Requirement	Remark	Result
	<p>It is permitted to bridge this insulation with an optocoupler complying with 2.10.5.4 b).</p> <p>It is permitted to bridge this insulation with a capacitor complying with EN 60384-14:2005, subclass Y2.</p> <p>A capacitor classified Y3 according to EN 60384-14:2005, may bridge this insulation under the following conditions:</p> <ul style="list-style-type: none"> - the insulation requirements are satisfied by having a capacitor classified Y3 as defined by EN 60384-14, which in addition to the Y3 testing, is tested with an impulse test of 2,5 kV defined in EN 60950-1:2006, 6.2.2.1; - the additional testing shall be performed on all the test specimens as described in EN 60384-14: - the impulse test of 2,5 kV is to be performed before the endurance test in EN 60384-14, in the sequence of tests as described in EN 60384-14. 		N/A
6.1.2.2	<p>In Finland, Norway and Sweden, the exclusions are applicable for PERMANENTLY CONNECTED EQUIPMENT, PLUGGABLE EQUIPMENT TYPE B and equipment intended to be used in a RESTRICTED ACCESS LOCATION where equipotential bonding has been applied, e.g. in a telecommunication centre, and which has provision for a permanently connected PROTECTIVE EARTHING CONDUCTOR and is provided with instructions for the installation of that conductor by a SERVICE PERSON.</p>		N/A
7.2	<p>In Finland, Norway and Sweden, for requirements see 6.1.2.1 and 6.1.2.2 of this annex.</p> <p>The term TELECOMMUNICATION NETWORK in 6.1.2 being replaced by the term CABLE DISTRIBUTION SYSTEM.</p>		N/A
7.3 (A11:2009)	<p>In Norway and Sweden, for requirements see 1.2.13.14 and 1.7.2.1 of this annex.</p>		N/A



EN 60950-1			
Clause	Requirement	Remark	Result

1.5.1	TABLE: List of critical components					P
Object/part No.	Manufacturer/ trademark	Type/model	Technical data	Standard	Mark(s) of conformity ¹⁾	
Enclosure and plug holder	SABIC INNOVATIVE PLASTICS US LLC	940(f1)	V-0; 120°C	UL 94	UL E121562	
PCB	DONGGUAN CITY HENGJIE ELECTRONIC CO LTD	B, C, D	V-0 or better, min. 130错误! 未找到引用源。C	UL 796	UL E354097	
(Alternative)	Various	Various	V-0 or better, min. 130错误! 未找到引用源。C	UL 796	UL	
Internal wire	Various	Various	105°C, min. 18AWG, 600V.	UL 758	UL	
Fuse (F1)	SHENZHEN GREAT ELECTRONICS CO LTD	RXF-1W	10ohm; 1W	UL 1412 EN 60065	UL E301541 VDE 40026608	
Y Capacitors	Shantou High-New Technology Dev. Zone Songtian Enterprise Co., Ltd.	CD	Max. 2200pF, min. 250Vac, 125°C, Y1 type	IEC/EN 60384-14 UL1414	VDE 40025754 UL E208107	
(Alternative)	Guangdong South Hongming Electronic Science & Technology Co., Ltd	F	Max. 2200pF, min. 250Vac, 125°C, Y1 type	UL1414	UL E154899	
(Alternative)	ShenzhenTeruixiang Electronic Co., Ltd	TY-Series	Max. 2200pF, min. 250Vac, 125°C, Y1 type	IEC/EN 60384-14 UL1414	VDE 40031733 UL E315719	
(Alternative)	Haohua Electronic Co., Ltd	CT 7	Max. 2200pF, min. 250Vac, 125°C, Y1 type	IEC/EN 60384-14 UL1414	VDE 40003902 UL E233106	
(Alternative)	Xiangtai Electronic (Shenzhen) Co., Ltd	YO-Series	Max. 2200pF, min. 250Vac, 125°C, Y1 type	IEC/EN 60384-14 UL1414	VDE 40036880 UL E319473	
Transformer (T1)	--	--	Class B	IEC60950-1	Tested with Appliance	
-Bobbin	CHANG CHUN PLASTICS CO LTD	T375J	V-0; 150°C	UL94	UL E59481	
-Magnet wire	DONG GUAN YIDA INDUSTRIAL CO LTD	UEW/130	130°C	UL 1446	UL E344055	



EN 60950-1					
Clause	Requirement			Remark	Result
-Triple insulation wire	Shanghai Xiangxiang Electron Co., Ltd.	TKE-B	130°C	IEC/EN 60950-1	VDE 40026588
- Insulation Tape	3M Company Electrical Markets DIV (EMD)	1350F-1	130°C	UL 510	UL E17385
-Varnish	John C. Dolph Co	BC-359	130°C	UL1446	UL E317427
-Tube	GREAT HOLDING INDUSTRIAL CO LTD	TFT	300V; 200°C	UL746	UL E156256
Supplementary information: ¹⁾ Provided evidence ensures the agreed level of compliance.					

EN 60950-1			
Clause	Requirement	Remark	Result

1.6.2	TABLE: electrical data test (in normal conditions)						P
fuse #	I rated(A)	U(V)	P (W)	I (A)	I fuse (A)	condition	
F1	--	90V/50Hz	782.56	9.712	9.712	Normal working	
F1	--	90V/60Hz	783.25	9.714	9.714	Normal working	
F1	10A	100V/50Hz	783.18	9.120	9.120	Normal working	
F1	10A	100V/60Hz	783.24	9.122	9.122	Normal working	
F1	10A	240V/50Hz	785.20	4.085	4.085	Normal working	
F1	10A	240V/60Hz	785.82	4.088	4.088	Normal working	
F1	--	264V/50Hz	786.36	3.756	3.756	Normal working	
F1	--	264V/60Hz	786.31	3.762	3.762	Normal working	

supplementary information:

2.1.1.5 c1)	TABLE: max. V, A, VA test				N/A
Voltage (rated) (V)	Current (rated) (A)	Voltage (max.) (V)	Current (max.) (A)	VA (max.) (VA)	

supplementary information:

2.2.2	TABLE: SELV voltage measurement		P
Location	Voltage measurement (Vdc)	C	
Between transformer secondary	34.8V	-	

2.5	TABLE: limited power sources				N/A
Measured Uoc (V) with all load circuits disconnected:	I _{sc} (A)		VA		
	Meas.	Limit	Meas.	Limit	
Normal		8		100	
SC		8		100	

supplementary information:
s-c=short circuit, o-c=open circuit

2.10.3 and 2.10.4	TABLE: clearance and creepage distance measurements						P
clearance cl and creepage distance dcr at/of:	Up (V)	U r.m.s. (V)	required cl (mm)	cl (mm)	required dcr (mm)	dcr (mm)	
L to N	340	240	1.5	>1.5	2.4	>2.4	
F1	340	240	2.0	>2.0	2.4	>2.4	
Live part to accessible parts	340	240	4.0	>4.0	4.8	>4.8	
CY1	340	240	4.0	>4.0	4.8	>4.8	
Pri. trace to sec. trace of T1	525	247	4.4	>4.4	5.0	>5.0	



EN 60950-1			
Clause	Requirement		Result

Pri. winding to sec. pin of T1	525	247	4.4	>4.4	5.0	>5.0
Core to sec. pin of T1	525	247	4.4	>4.4	5.0	>5.0

2.10.5	TABLE: Distance through insulation measurements					P
Distance through insulation (DTI) at/of:	U peak (V)	U rms (V)	Test voltage (V)	Required DTI (mm)	DTI (mm)	
Transformer bobbin	525	247	3000	0.4	0.81	
Supplementary information:						

4.5	TABLE: temperature rise measurements			P
	test voltage (V)	See below		—
	t1 (°C).....	/		—
	t2 (°C).....	/		—
temperature rise dT of part/at:	T (°C)		Required Tmax (°C)	
	90V, 60Hz	264V, 50Hz		
Plug holder	58.5	56.3	120	
Internal wire	55.2	53.8	105	
Button	52.2	50.4	85	
CY1	83.2	79.8	125	
T1 winding	98.1	94.2	110	
T1 core	90.4	87.0	110	
PCB near main IC	77.3	75.3	130	
PCB near T1	88.7	86.2	130	
Enclosure outside	58.4	55.3	95	
Enclosure inside	66.8	63.7	95	
Ambient	40.0	40.0	--	

Remark:

1) T shall not exceed (Tmax + Tamb – Tma), see clause 1.4.12.

T: is the temperature of the given part measured under the prescribed test conditions;

Tmax: is the maximum temperature specified for compliance with the test;

Tamb: is the ambient temperature during test;

Tma: is the maximum ambient temperature during permitted by the manufacturer's specification, see below 2).

2) The maximum ambient temperature is +40.0°C

Measured by thermocouple, transformer T1 is Class B material, see table 1.5.1 for details.



EN 60950-1			
Clause	Requirement	Remark	Result

4.5.5	TABLE: ball pressure test of thermoplastics		P
	required impression diameter (mm)	2 mm	--
part	test temperature (°C)	impression diameter (mm)	
Bobbin	125	0.8	
Plug holder	125	0.9	

5.1.6	TABLE: touch current measurement				P
Measured between:	L → terminal A (mA)	N → terminal A (mA)	Limit (mA)	Comments	
L/N to enclosure	0.04	0.03	0.25	--	
L/N to terminal	0.08	0.08	0.25	--	
Input: 264V, 50Hz					

5.2	TABLE: electric strength tests and impulse tests		P
test voltage applied between:	test voltage (Vac)	breakdown	
L to N	1500	No	
L/N to enclosure	3000	No	
L/N to terminal	3000	No	
T1 pri. winding to sec.winding	3000	No	
T1 core to sec.winding	3000	No	
Insulation tape	3000	No	
Remark: tested after humidity treatment, heating test, each fault condition tests, impact test and so on.			

5.3	TABLE: fault condition tests						P
	ambient temperature (°C)		25.0				—
	model/type of power supply		--				—
	rated markings of power supply		--				—
No.	component No.	fault	test voltage (V)	test time	fuse No.	Fuse current (A)	result
1	T1 Pin 1-2	SC	264	10min	F1	0.01	Unit Shutdown, recoverable, no hazard.
2	T1 Pin 3-4	SC	264	10min	F1	0.01	Unit Shutdown, recoverable, no hazard.
3	T1 Pin 5-6	SC	264	10min	F1	0.01	Unit Shutdown, recoverable, no hazard.
4	D1	SC	264	1s	F1	0	Fuse (F1) opened immediately, No hazard.



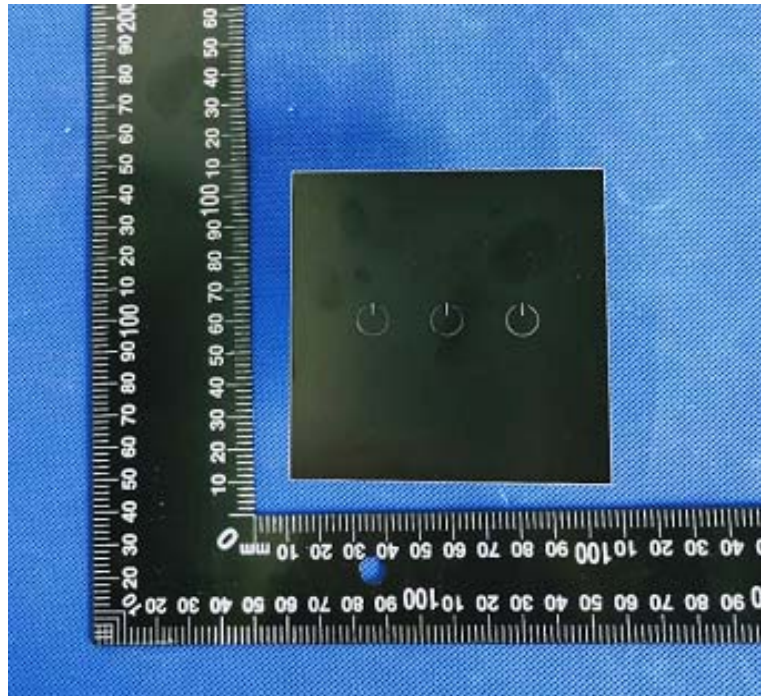
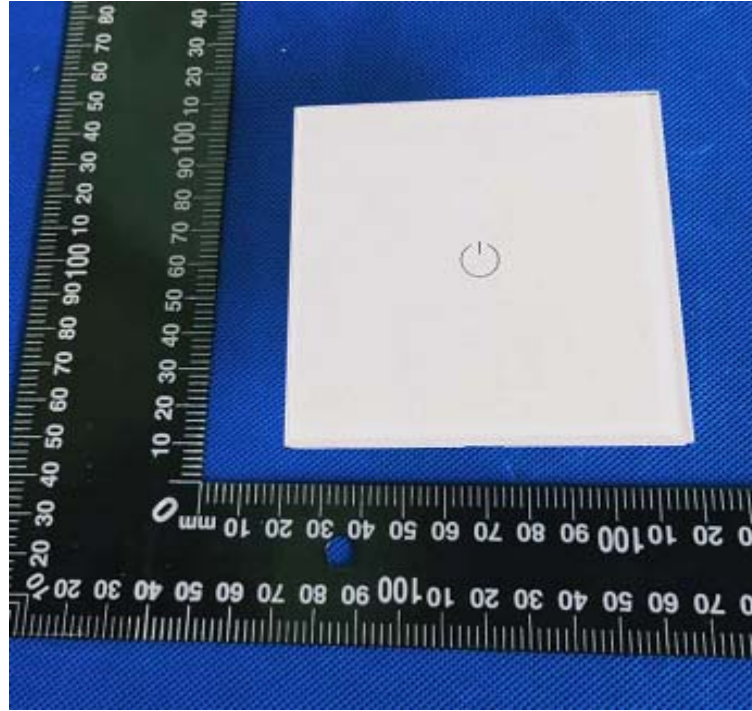
EN 60950-1							
Clause	Requirement					Remark	Result
5	D2	SC	264	1s	F1	0	Fuse (F1) opened immediately, No hazard.
6	C1	SC	264	1s	F1	0	Fuse (F1) opened immediately, No hazard.

Annex No. 1
Photo documentation

Type of equipment, model: Wifi smart device , VT-5003



Annex No. 1



Annex No. 1

